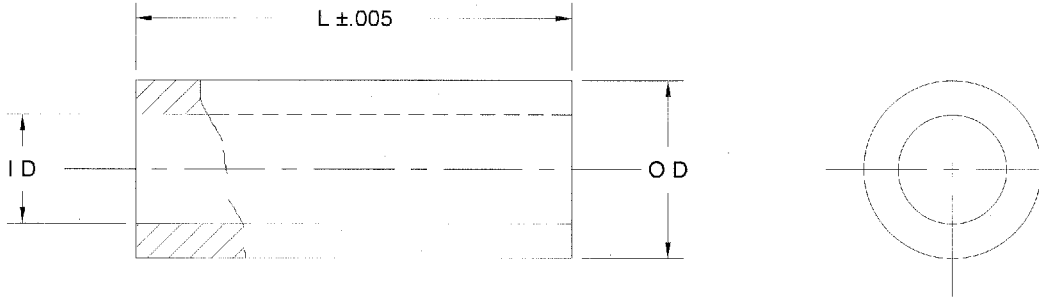


FED. SUP CLASS
5365



DIAMETER DASH NUMBER.	SCREW OR BOLT DIAMETER. (REF)	OD		ID	
		MIN	MAX	MIN	MAX
0	.112	.178	.198	.115	.148
1	.138	.240	.260	.143	.172
(1) 2	.164	.240	.260	.169	.172
3	.164 & .190	.302	.322	.194	.234
4	.250	.365	.385	.256	.297
5	.313	.428	.448	.320	.360
6	.375	.485	.515	.377	.427
7	.438	.548	.578	.440	.490
8	.500	.610	.640	.517	.567
9	.562	.672	.702	.564	.614
10	.625	.735	.765	.627	.677
12	.750	.860	.890	.752	.802
14	.875	.985	1.015	.877	.927
16	1.000	1.110	1.140	1.002	1.052

LIST OF CURRENT SHEETS

NO	REV
1	11
2	3

11

AEROSPACE INDUSTRIES ASSOCIATION OF AMERICA, INC
1000 WILSON BLVD.
ARLINGTON, VA 22209

THIS DRAWING SUPERSEDES ALL ANTECEDENT STANDARD DRAWING FOR THE
SAME PRODUCT AND SHALL BECOME EFFECTIVE NO LATER THAN SIX MONTHS
FROM THE LAST DATE OF APPROVAL SHOWN HEREON.

FORM 4-88

APPROVAL DATE: JULY 1943 REVISION: (8) 15 APRIL 1987 (9) 19 SEPT. 1987 (10) 17 DEC. 1993 (11) JULY 2006

CUSTODIAN NATIONAL AEROSPACE STANDARDS COMMITTEE		THIRD ANGLE PROJECTION
PROCUREMENT SPECIFICATION NONE	TITLE SPACER, SLEEVE- SCREW AND BOLT	CLASSIFICATION STANDARD PRACTICE NAS43 SHEET 1 OF 2

MATERIAL: 2024-T3 ALUMINUM ALLOY TUBING, SPECIFICATION AMS-WW-T-700/3, TYPE I OR
2024-T4 ALUMINUM ALLOY WIRE OR ROD, SPECIFICATION AMS-QQ-A-225/6.

3

- (1) 4130 ALLOY STEEL TUBING, SPECIFICATION AMS-T-6736, TYPE I, HT 125.
8630 ALLOY STEEL TUBING, SPECIFICATION AMS6530.
4130 ALLOY STEEL BAR, SPECIFICATION AMS-S-6758, COND F.
8630 ALLOY STEEL BAR, SPECIFICATION MIL-S-6050, COND F.

TENSILE STRENGTH: 2024-T ALUMINUM ALLOY 62,000 PSI MIN.
HEAT TREATED ALLOY STEEL 125,000 - 145,000 PSI

FINISH: 2024-T ALUMINUM ALLOY GREY ANODIZE PER SPECIFICATION MIL-A-8625, TYPE I OR
CHEMICAL FILM PER MIL-C-5541, CLASS 1A, DYED BLUE. (SEE FINISH CODE)

3

ALLOY STEEL CADMIUM PLATE PER AMS-QQ-P-416, TYPE II, CLASS 2, DYED TO AN IRIDESCENT BRONZE
COLOR. THE SALT SPRAY REQUIREMENT AND TESTS SHALL NOT APPLY.

LENGTH CODE: SECOND DASH NUMBER DESIGNATES LENGTH IN 1/64 INCH INCREMENTS.

MATERIAL CODE: FOR 2024-T ALUMINUM ALLOY SPACERS ADD SUFFIX "DD" TO BASIC PART NUMBER.
FOR ALLOY STEEL SPACERS ADD SUFFIX "HT" TO BASIC PART NUMBER.

FINISH CODE: FOR 2024-T ALUMINUM WITH GREY ANODIZE, ADD SUFFIX "N" TO COMPLETE PART NUMBER.
FOR 2024-T ALUMINUM WITH CHEMICAL FILM, ADD SUFFIX "FC" TO COMPLETE PART NUMBER.
FOR SPACERS WITH NO FINISH, ADD "A" TO COMPLETE PART NUMBER (SEE NOTE 5).

3

GENERAL CODE: (5) NAS43 ("DD" OR "HT") - (DIAMETER DASH NUMBER) - (LENGTH DASH NUMBER) - ("A", "N" OR "FC" IF
REQUIRED)

3

EXAMPLES: NAS43DD4-8FC = 2024-T ALUMINUM ALLOY SPACER .365 - .385 OD x .256 - .297 ID x .125 LONG, FOR .250
BOLT, WITH CHEMICAL FILM FINISH.
NAS43HT4-8 = ALLOY STEEL SPACER .365 - .385 OD x .256 - .297 ID x .125 LONG, FOR .250 BOLT, WITH
CADMIUM PLATE FINISH.

- NOTES: (1) DASH -2 INACTIVE FOR DESIGN AFTER 1 NOV. 1945. LOW CARBON STEEL SPACERS INACTIVE FOR DESIGN AFTER 15
NOV. 1952. NORMALIZED ALLOY SPACERS INACTIVE FOR DESIGN AFTER 15 AUG. 1962. USE ACTIVE NAS43 SPACERS
IN DESIGN. FOR DESCRIPTION OF STATUS NOTES SEE NAS380.
(2) REMOVE ALL BURRS. BREAK SHARP EDGES .005 MAX.
(3) DIMENSIONS IN INCHES.
(4) TUBING, WIRE OR ROD STOCK OPTIONAL. DRILL TUBING IF NECESSARY TO MEET ID SPECIFIED.
(5) FOR UNFINISHED ALLOY STEEL (FINISH CODE "A") APPLY A LIGHT, HIGH GRADE MACHINE OIL PRIOR TO SHIPPING.
(6) SURFACE ROUGHNESS IN ACCORDANCE WITH ASME B46.1. UNLESS OTHERWISE SPECIFIED, THE SURFACE
ROUGHNESS SHALL NOT EXCEED 125 MICROINCHES.

3

AEROSPACE INDUSTRIES ASSOCIATION OF AMERICA, INC.
1000 WILSON BLVD.
ARLINGTON, VA 22209

THIS DRAWING SUPERSEDES ALL ANTECEDENT STANDARD DRAWING FOR THE
SAME PRODUCT AND SHALL BECOME EFFECTIVE NO LATER THAN SIX MONTHS
FROM THE LAST DATE OF APPROVAL SHOWN HEREON

RM 4-88

NAS43
SHEET 2 OF 2

APPROVAL DATE: JUNE 1982 REVISION: 1 19 SEPT. 1987 2 17 DEC. 1993 3 JULY 2006