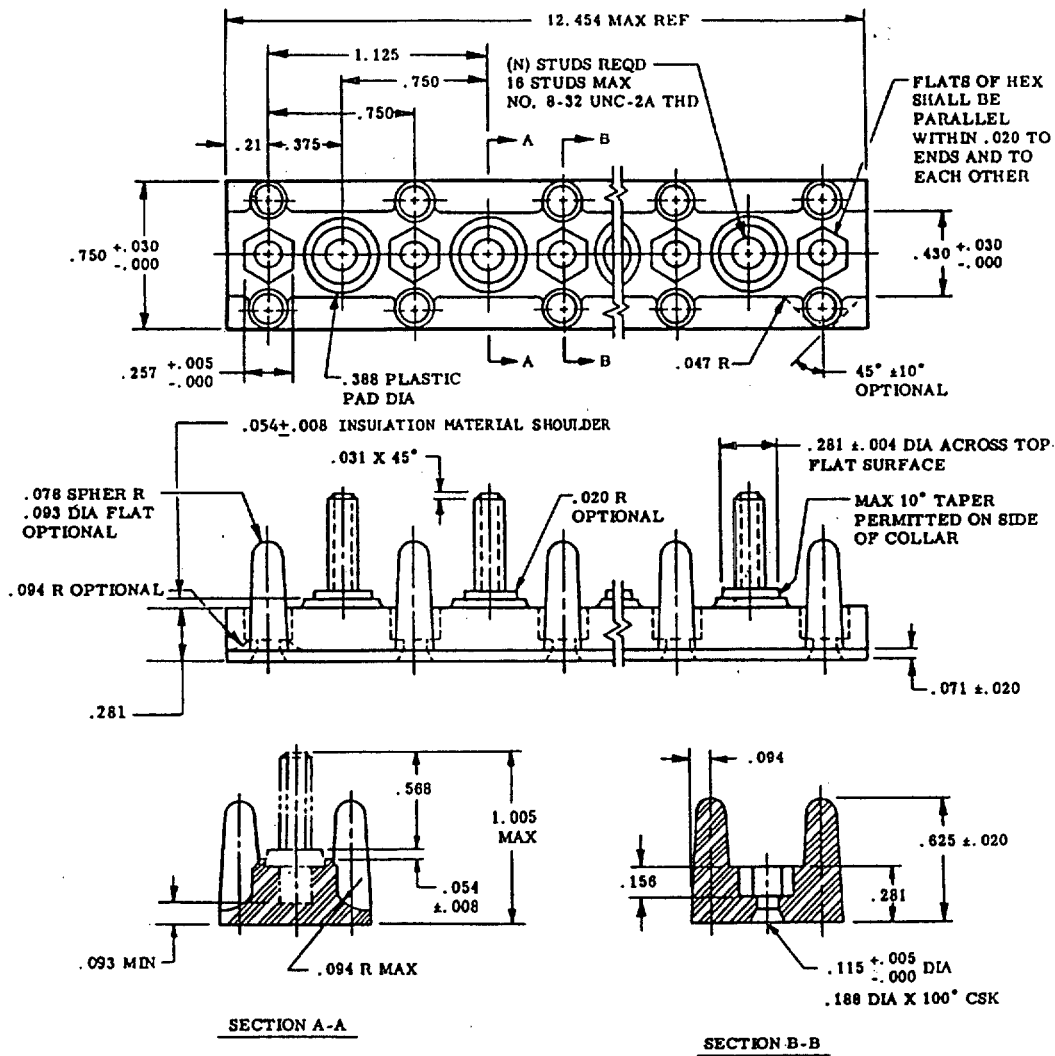




THE REQUIREMENTS FOR ACQUIRING THE PRODUCT(S) DESCRIBED HEREIN SHALL CONSIST OF THIS SPECIFICATION SHEET AND THE ISSUE OF THE FOLLOWING SPECIFICATION LISTED IN THAT ISSUE OF THE DODISS SPECIFIED IN THE SOLICITATION: NONE



DASH NO.  
-6-(N)

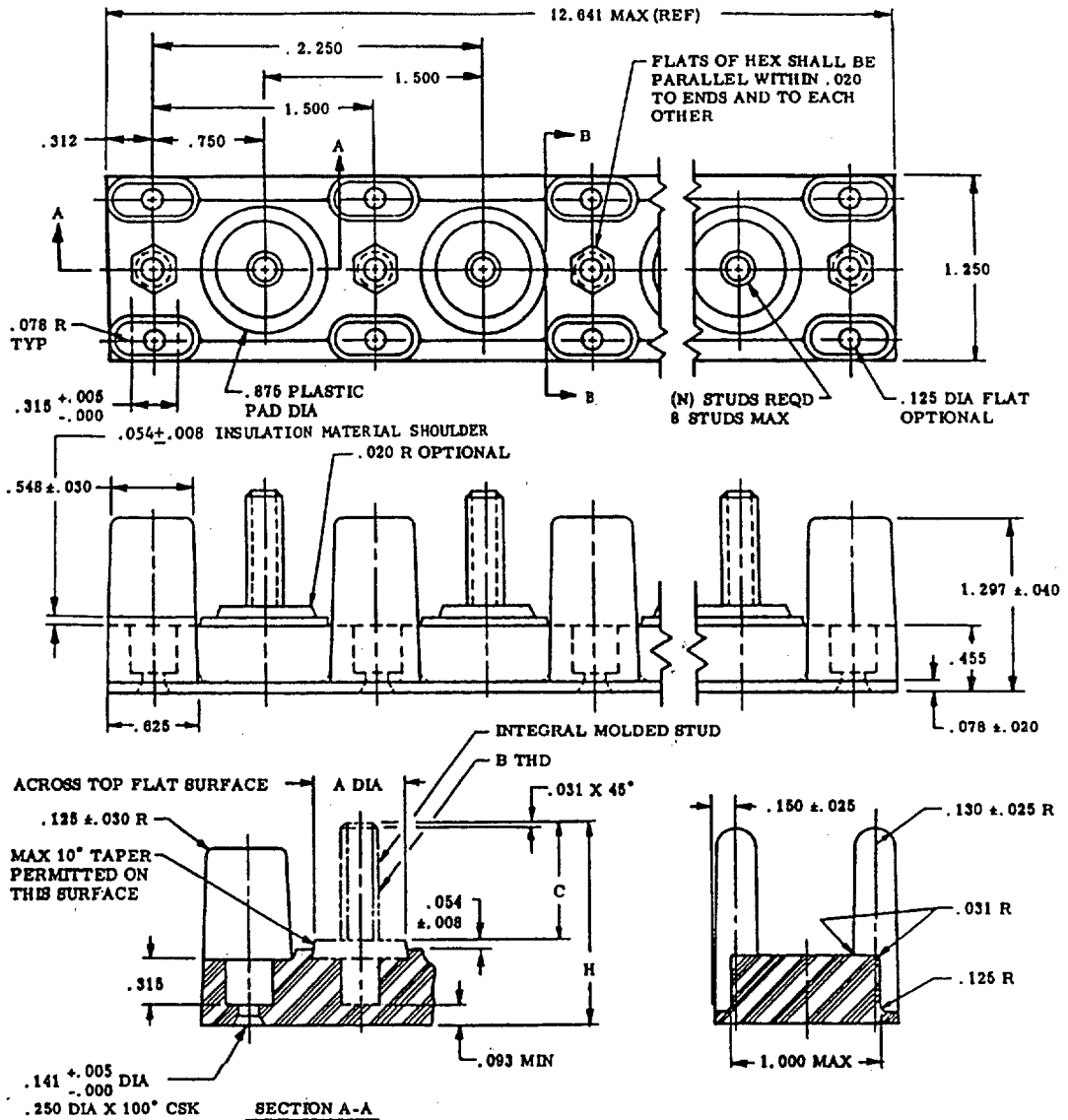
FOR MATERIAL, IDENTIFICATION, MARKING, TOLERANCES, AND TEST REQUIREMENTS, SEE SHEET 5.  
THE GOVERNMENT SHALL PROCURE AND STOCK ONLY PART NO. MS27212-6-16.  
(N) INDICATES THE NUMBER OF STUDS IN AN ASSEMBLY.  
EXAMPLE OF PART NUMBER: MS27212-6-16-A TERMINAL BOARD ASSEMBLY HAVING 16 NO. 8-32 STUDS.

THIS SPECIFICATION IS APPROVED FOR USE BY ALL DEPARTMENTS AND AGENCIES OF THE DEPARTMENT OF DEFENSE.

PREPARING ACTIVITY: NAVY - AS CUSTODIANS: ARMY - ER      NAVY - AS AIR FORCE - 85      DLA - GS REVIEW: USAF - 99      ARMY - MI NAVY - MC PROJECT NUMBER: 5940-1155	MILITARY SPECIFICATION SHEET TITLE: TERMINAL BOARD ASSEMBLY, MOLDED-IN-STUD, ELECTRIC	SPECIFICATION SHEET NUMBER <b>MS 27212</b> 15 SEP 94 REV P SUPERSEDING MS 27212N      15 SEP 1989 AMSC-      N/A      FSC 5940
---	---	---



THE REQUIREMENTS FOR ACQUIRING THE PRODUCT(S) DESCRIBED HEREIN SHALL CONSIST OF THIS SPECIFICATION SHEET AND THE ISSUE OF THE FOLLOWING SPECIFICATION LISTED IN THAT ISSUE OF THE DODISS SPECIFIED IN THE SOLICITATION: NONE



DASH NO.	A $\pm .005$ DIA	B THREAD	C	H MAX
-3-(N)	.625	1/4-28UNF-2A	.710	1.321
-4-(N)	.750	5/16-24UNF-2A	.781	1.392
-5-(N)	.750	3/8-24UNF-2A	.908	1.517

FOR MATERIAL, IDENTIFICATION, MARKING, TOLERANCES, AND TEST REQUIREMENTS, SEE SHEET 5. THE GOVERNMENT SHALL PROCURE AND STOCK ONLY PART NUMBER MS27212-3-8, MS27212-4-8, AND MS27212-5-8.

(N) INDICATES THE NUMBER OF STUDS IN AN ASSEMBLY. EXAMPLE OF PART NUMBER: MS27212-4-8 - A TERMINAL BOARD ASSEMBLY HAVING EIGHT 5/16 STUDS.

THIS SPECIFICATION IS APPROVED FOR USE BY ALL DEPARTMENTS AND AGENCIES OF THE DEPARTMENT OF DEFENSE.

PREPARING ACTIVITY: NAVY-AS  
CUSTODIANS: ARMY-ER NAVY-AS  
AIR FORCE-85 DLA-GS  
REVIEW: USAF-99 ARMY-MI  
NAVY-MC  
PROJECT NUMBER: 5940-1155

MILITARY SPECIFICATION SHEET  
TITLE: TERMINAL BOARD ASSEMBLY,  
MOLDED-IN-STUD, ELECTRIC

SPECIFICATION SHEET NUMBER  
MS 27212 15 SEP 94  
REV P  
SUPERSEDING  
MS 27212N 15 SEP 1989  
AMSC- N/A FSC 5940

DISTRIBUTION STATEMENT A. Approved for public release; distribution is unlimited.

Page 4 of 6



(P) TABLE I. ATTACHING HARDWARE.

DASH NO.	ATTACHING HARDWARE			
	FLAT WASHER	LOCKWASHER 1/	NUT	
			PLAIN (HEXAGON)	OR SELF-LOCKING
-1-(N)	AN960-C6	MS35338-136 OR -155	MS35649-264	MS21042-06 OR MS21042L06
-2-(N)	AN960-C10	MS35338-138 OR -157	MS35650-304	MS21042-3 OR MS21042L3
-3-(N) 2/	AN960-C416	MS35338-139 OR -158	MS35650-3254	MS21042-4 OR MS21042L4
-4-(N) 2/	AN960-C516	MS35338-140 OR -159	MS35650-3314	MS21042-5 OR MS21042L5
-5-(N) 2/	AN960-C616	MS35338-141 OR -160	MS35650-3384	MS21042-6 OR MS21042L6
-6-(N)	AN960-C8	MS35338-137 OR -156	MS35649-284	MS21042-08 OR MS21042L08

- 1/ LOCKWASHER IS NOT REQUIRED WHEN SELF-LOCKING TYPE NUT IS USED.
- 2/ TERMINAL LUGS SPECIFIED ON MS25036 AS DASH NUMBERS 135 THROUGH 141 ARE NOT TO BE ATTACHED TO THESE ASSEMBLIES.

FOR DESIGN FEATURE PURPOSES, THIS STANDARD TAKES PRECEDENCE OVER PROCUREMENT DOCUMENTS REFERENCED HEREIN. REFERENCED DOCUMENTS SHALL BE OF THE ISSUE IN EFFECT ON DATE OF INVITATIONS FOR BID.

(P) Table II. METRIC CONVERSION.

INCH	MM	INCH	MM	INCH	MM	INCH	MM
.004	.102	.141	3.581	.430	10.922	.891	22.631
.005	.127	.150	3.810	.437	11.099	.906	23.012
.008	.203	.156	3.962	.455	11.557	.938	23.825
.020	.508	.188	4.775	.522	13.259	.953	24.206
.025	.635	.210	5.334	.548	13.919	1.000	25.400
.030	.762	.218	5.537	.565	14.351	1.005	25.527
.031	.787	.222	5.639	.568	14.427	1.079	27.406
.040	1.016	.250	6.350	.580	14.732	1.125	28.575
.047	1.194	.257	6.528	.594	15.088	1.250	31.750
.050	1.270	.275	6.985	.595	15.113	1.297	32.944
.054	1.372	.281	7.137	.625	15.875	1.321	33.553
.071	1.803	.297	7.544	.688	17.475	1.392	35.357
.078	1.981	.312	7.925	.710	18.034	1.500	38.100
.093	2.362	.315	8.001	.750	19.050	1.517	38.532
.094	2.388	.328	8.331	.781	19.837	2.250	57.150
.115	2.921	.350	8.890	.789	20.041	12.334	313.284
.125	3.175	.375	9.525	.875	22.225	12.454	316.332
.130	3.302	.388	8.585	-	-	-	-

THE REQUIREMENTS FOR ACQUIRING THE PRODUCT(S) DESCRIBED HEREIN SHALL CONSIST OF THIS SPECIFICATION SHEET AND THE ISSUE OF THE FOLLOWING SPECIFICATION LISTED IN THAT ISSUE OF THE DODISS SPECIFIED IN THE SOLICITATION: NONE

THIS SPECIFICATION IS APPROVED FOR USE BY THE NAVAL AIR SYSTEMS COMMAND, DEPARTMENT OF THE NAVY, AND IS AVAILABLE FOR USE BY ALL DEPARTMENTS AND AGENCIES OF THE DEPARTMENT OF DEFENSE.

PREPARING ACTIVITY: NAVY-AS CUSTODIANS: ARMY-ER NAVY-AS AIR FORCE-85 DLA-GS REVIEW: USAF-99 ARMY-MI USER: NAVY-MC PROJECT NUMBER: 5940-1155	MILITARY SPECIFICATION SHEET TITLE: TERMINAL BOARD ASSEMBLY, MOLDED-IN-STUD, ELECTRIC	SPECIFICATION SHEET NUMBER <b>MS 27212</b> 15 SEP 94 REV P SUPERSEDING MS 27212N 15 SEP 1989 AMSC- N/A FSC 5940
--	---	--