

INCH-POUND

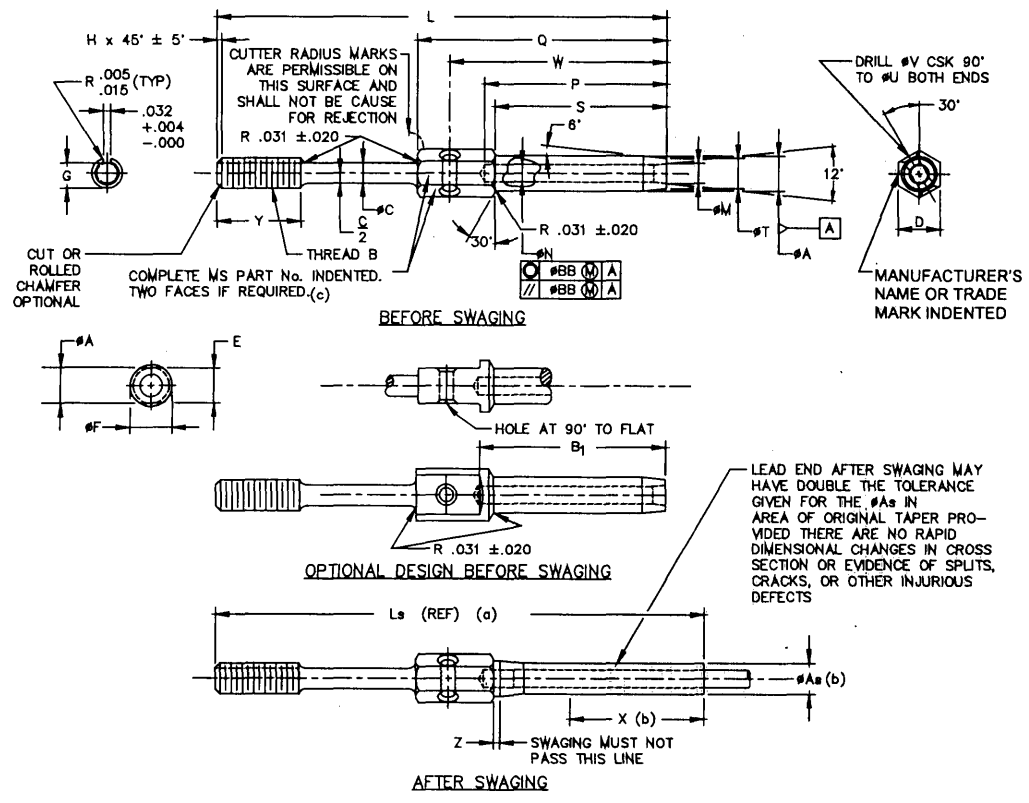
MS21260H  
15 August 1997  
MS21260G  
12 March 1979

MILITARY SPECIFICATION SHEET

TERMINAL, WIRE ROPE, STUD

This specification sheet is approved for use by all Departments and Agencies of the Department of Defense.

The requirements for acquiring the product described herein shall consist of this specification sheet and the issue of the following specification listed in that issue of the Department of Defense Index of Specifications and Standards (DoDISS) specified in the solicitation: MIL-DTL-781.



- (a) Reference dimensions are for design purposes only and are not an inspection requirement.
- (b) Swaged terminals shall conform to 'ØAs' for length 'X'.
- (c) For terminal sizes -2 thru -5 use basic part number only, example: MS21260.

(H) Entire document revised

MS PART NUMBER		NOM. CABLE DIA. REF	MIN. BREAKING STRENGTH LB (a)	THREAD B UN-3A UNF-3A	ØA	ØAs		B1	ØC +.006 - .000	E +.000 - .010	ØF +.010 - .005	G		H	
DASH NUMBER (SIZE)	REF					ØA	ØAs					MIN	MAX	MIN	MAX
MS212602RH	MS212602LH	.062	480	No. 6-40	.160	.138	1.042	.092	.188	.188	.1139	.1094	.031		
MS212603RH	MS212603LH	.093	920	No. 10-32	.218	.190	1.261	.133	.250	.187	.1638	.1568			
MS212604RH	MS212604LH	.125	2000	1/4-28	.250	.219	1.511	.195	.313	.250	.2224	.2152	.047	.015	
MS212605RH	MS212605LH	.156	2800		.297	.250	1.761	.245	.375	.312	.2830	.2754			
MS212606RH	MS212606LH	.187	4200	5/16-24	.359	.313	2.011	.306	.438	.375	.3454	.3378			
MS212607RH	MS212607LH	.218	5600	3/8-24	.427	.375	2.261	.361	.500	.438	.4052	.4072			
MS212608RH	MS212608LH	.250	7000		.494	.438	2.511	.406	.688	.625	.5825	.5826			
MS212609RH	MS212609LH	.281	8000	7/16-20	.563	.500	2.761	.476	.750	.688	.625	.5825			
MS212610RH	MS212610LH	.312	9800	1/2-20	.635	.563	3.011	.538	.812	.750	.688	.625			
MS212611RH	MS212611LH	.375	14400	9/16-18	.703	.625	3.511	.654	1.000	.912	.812	.750			
MS212612RH	MS212612LH	.437	17600	5/8-18	.781	.688	4.011	.768	1.125	1.000	.912	.812			
MS212613RH	MS212613LH	.500	22800	3/4-16	.844	.750	4.698	.893	1.438	1.125	.9608	.9516			
MS212614RH	MS212614LH	.562	28500	7/8-14	.984	.875	5.011	1.002	1.625	1.438	1.269	1.1972			
MS212615RH	MS212615LH	.625	35000		1.109	1.000	5.511	1.128	1.875	1.625	1.438	1.269			
MS212616RH	MS212616LH	.750	49600	1-12	1.359	1.250	6.511	1.438	2.125	1.875	1.625	1.438			
MS212617RH	MS212617LH	.875	66500	1 1/8-12	1.593	1.437	7.166	1.625	2.625	2.125	1.875	1.625			
MS212618RH	MS212618LH	1.000	85400	1 1/4-12	1.812	1.625	8.229		3.125	2.625	2.125	1.875			

DASH NUMBER (SIZE)	L +/- .063	Is REF	ØM	ØN	P	Q +.031 - .016	S +.062 - .000	ØT	ØU	ØV +.005 - .000	W +/- .016	X MIN	Y +/- .047	Z MIN	ØBB
L2	3.491	3.67	.090	.078	1.042	1.319	.969	.138	.094	.063	1.174	.70	.375		
S2	2.616	2.79	.119	.109	1.261	1.581	1.188	.190			1.411	.80	.500		
L3	3.738	3.86	.154	.141	1.511	1.863	1.438	.219			1.682	1.05	.563		
L4	4.020	4.28	.188	.172	1.761	2.157	1.688	.250			1.958	1.29	.625		
S4	3.145	3.40	.223	.203	2.011	2.257	1.938	.313			2.237	1.31	.750		
L5	4.314	4.66	.257	.234	2.261	2.757	2.188	.375			2.518	1.55	.875		
L6	4.612	4.78	.291	.265	2.511	3.061	2.438	.438			2.784	1.70	1.000		
S5	3.439	3.78	.330	.328	2.761	3.385	2.688	.500			3.076	1.89	1.000		
L7	4.914	5.21	.360	.348	3.011	3.718	2.938	.563			3.326	2.06	1.000		
L8	5.218	5.52	.390	.372	3.261	4.061	3.188	.625			3.628	2.12	1.125		
S6	3.737	3.90	.430	.412	3.511	4.281	3.438	.688			3.828	2.12	1.125		
L9	5.542	5.90	.468	.448	3.761	4.812	3.938	.750			4.1375	2.31	1.250		
L10	5.875	6.30	.500	.472	4.011	5.562	4.625	.812			4.375	2.31	1.250		
L11	6.208	7.01	.534	.508	4.261	6.000	4.938	.875			4.648	2.31	1.250		
L12	6.542	7.28	.563	.532	4.511	6.750	5.438	1.000			5.093	2.31	1.250		
L13	6.875	7.78	.594	.558	4.761	7.500	6.188	1.125			5.468	2.31	1.250		
L14	7.208	8.116	.625	.582	5.011	8.250	6.938	1.250			5.848	2.31	1.250		
L15	7.542	8.448	.656	.612	5.261	9.000	7.688	1.375			6.228	2.31	1.250		
L16	7.875	8.78	.688	.642	5.511	9.750	8.438	1.500			6.608	2.31	1.250		
L17	8.208	9.116	.722	.672	5.761	10.500	9.188	1.625			6.988	2.31	1.250		
L18	8.542	9.448	.750	.702	6.011	11.250	9.938	1.750			7.368	2.31	1.250		
L19	8.875	9.78	.778	.728	6.261	12.000	10.688	1.875			7.748	2.31	1.250		
L20	9.208	10.116	.800	.748	6.511	12.750	11.438	2.000			8.128	2.31	1.250		
L21	9.542	10.448	.825	.772	6.761	13.500	12.188	2.125			8.508	2.31	1.250		
L22	9.875	10.78	.850	.792	7.011	14.250	12.938	2.250			8.888	2.31	1.250		
L23	10.208	11.116	.875	.812	7.261	15.000	13.688	2.375			9.268	2.31	1.250		
L24	10.542	11.448	.900	.832	7.511	15.750	14.438	2.500			9.648	2.31	1.250		
L25	10.875	11.78	.925	.852	7.761	16.500	15.188	2.625			10.028	2.31	1.250		
L26	11.208	12.116	.950	.872	8.011	17.250	15.938	2.750			10.408	2.31	1.250		
L27	11.542	12.448	.975	.892	8.261	18.000	16.688	2.875			10.788	2.31	1.250		
L28	11.875	12.78	1.000	.912	8.511	18.750	17.438	3.000			11.168	2.31	1.250		
L29	12.208	13.116	1.025	.932	8.761	19.500	18.188	3.125			11.548	2.31	1.250		
L30	12.542	13.448	1.050	.952	9.011	20.250	18.938	3.250			11.928	2.31	1.250		
L31	12.875	13.78	1.075	.972	9.261	21.000	19.688	3.375			12.308	2.31	1.250		
L32	13.208	14.116	1.100	.992	9.511	21.750	20.438	3.500			12.688	2.31	1.250		

(a) To achieve the minimum breaking strength, for the terminal test only, a galvanized carbon steel wire rope shall be used.

MS21260H

REQUIREMENTS:

1. Material: Steel, corrosion resistant, steel 303Se (UNS S30323 or S30300) or 304 (UNS S30400).
2. Finish: Finish in accordance with MIL-DTL-781.
3. Threads: Threads in accordance with FED-STD-H28/20.
4. Swage in accordance with specification MIL-DTL-6117
5. Tolerance: Unless otherwise specified, tolerances: decimals  $\pm .010$ , angles  $\pm 3^\circ$ .

NOTES:

1. Dimension in inches.
2. Remove all burrs and sharp edges
3. Interpret drawing in accordance with ASME Y14.5M.
4. In the event of a conflict between the text of this document and the references cited herein the text of this document takes precedence.
5. Unless otherwise specified, issues of referenced documents are those in effect at the time of solicitation.
6. Interchangeability relationship: MS21260 parts can universally replace the canceled AN669 and NAS650 parts identified by the same dash number; but the canceled AN669 and NAS650 parts cannot replace the superseding MS21260 parts. MS21260 corrosion resistant steel parts can universally replace the canceled carbon and alloy steel parts identified by the same dash number.

MILITARY INTEREST

Custodians:

Army - AR  
Navy - AS  
Air Force - 99

Preparing Activity:  
DLA-IS

(Project 4030-0278)

Review activities:

Army - ME  
Navy - MC