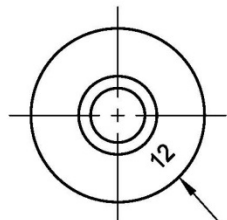




PRINTED COPIES OF THIS DOCUMENT ARE FOR "REFERENCE" ONLY. CURRENT REVISIONS ARE AVAILABLE ONLINE.

## HEAD MARKING



GRIP IDENTIFICATION

(GRIP IDENTIFICATION NOT  
REQUIRED FOR -.3 DIAMETER)

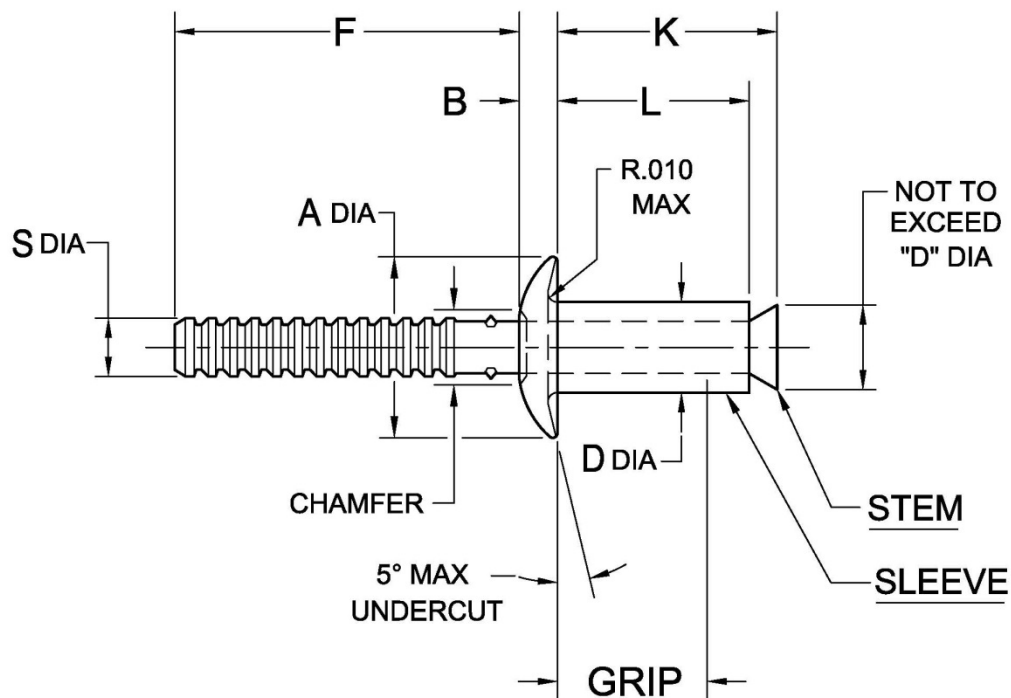


TABLE I

DIA. DASH NO.	A	B +.010 -.000	D +.003 -.001	F MIN	S ±.003
-3	.178-.196	.040	.094	.750	.064
-4	.238-.262	.054	.125		.086
-5	.296-.328	.067	.156		.108
-6	.356-.394	.080	.187		.127
-8	.465-.535	.107	.250	1.000	.170

NOTICE: ALL DIMENSIONS ARE IN INCHES AND APPLY AFTER FINISH AND BEFORE LUBRICATION UNLESS OTHERWISE SPECIFIED.

WARNING: FASTENERS MAY NOT PERFORM PROPERLY IF ALTERED FROM THE MANUFACTURER'S AS-SHIPPED CONDITION OR INSTALLED IN CONDITIONS OTHER THAN SPECIFIED HEREIN.

PROCUREMENT SPECIFICATION:

NASM8814

NAS 523 CODE:

**CHERRY® MS RIVET**  
SERRATED STEM, PULL-THROUGH  
UNIVERSAL HEAD

SHEET 1 OF 3

ISSUE

12-30-77

REV.

W 04-11-17

PART NUMBER

**CR9127**



TABLE II

FINISH CODE	MATERIAL ①		FINISH	
	SLEEVE	STEM	SLEEVE	STEM
---	5056 ALUMINUM PER QQ-A-430	STEEL PER ASTM A510	ANODIZE PER MIL-A-8625 TYPE II, CL 2 ORANGE COLOR	AS REQUIRED FOR CORROSION PROTECTION
A3			CHEM. FILM PER MIL-DTL-5541 CL 1A GOLD COLOR	
DLA3			CHEM. FILM PER MIL-DTL-5541 CL 1A AND NO LUBE	DRY FILM LUBRICANT PER DOD-L-85645 TYPE 1 ONLY (DICRONITE DL-5)
G ⑥			CHEM. FILM PER MIL-DTL-5541 CL 1A, TYPE II	AS REQUIRED FOR CORROSION PROTECTION
GDLA3 ⑥			CHEM. FILM PER MIL-DTL-5541 CL 1A, TYPE II BLUE COLOR	DRY FILM LUBRICANT PER DOD-L-85645 TYPE 1 ONLY (DICRONITE DL-5)

TABLE III

GRIP DASH NO.	GRIP RANGE ⑤				-3 DIA		-4 DIA		-5 DIA		-6 DIA		-8 DIA	
	-3 & -4 DIA.		-5, -6 & -8 DIA.		L MAX	K MAX	L MAX	K MAX	L MAX	K MAX	L MAX	K MAX	L MAX	K MAX
	MIN	MAX	MIN	MAX										
-01	.015	.062	.015	.062	.140	.218	.170	.256	④.211	.380	③④.239	.420	---	---
-02	.063	.125	②	.125	.203	.281	.232	.318	.274	.440	.301	.480	③.342	.520
-03	.126	.187	.126	.187	.265	.343	.295	.381	④.336	.500	④.363	.540	④.405	.585
-04	.188	.250	.126	.250	.328	.405	.357	.443	.399	.560	.426	.600	.447	.650
-05	.251	.312	.251	.312	④.390	.468	.420	.506	④.462	.625	④.489	.660	④.510	.710
-06	.313	.375	.251	.375	④.453	.530	.482	.568	.524	.690	.551	.720	.572	.770
-07	.376	.437	.376	.437	---	---	.544	.630	④.602	.750	④.613	.780	④.635	.830
-08	.438	.500	.376	.500	---	---	.607	.693	.679	.810	.706	.840	.697	.890
-09	---	---	.501	.562	---	---	---	---	④.742	.873	④.753	.905	④.760	.955
-10	---	---	.501	.625	---	---	---	---	④.805	.936	.801	.970	.822	1.020
-11	---	---	.626	.687	---	---	---	---	---	---	④.864	1.035	④.885	1.085
-12	---	---	.626	.750	---	---	---	---	---	---	.926	1.100	.947	1.150
-13	---	---	.751	.812	---	---	---	---	---	---	④.989	1.160	④.1.010	1.210
-14	---	---	.751	.875	---	---	---	---	---	---	1.051	1.220	1.072	1.270
-15	---	---	.876	.937	---	---	---	---	---	---	---	---	④.1.134	1.335
-16	---	---	.876	1.000	---	---	---	---	---	---	---	---	1.195	1.400

SHEET 2 OF 3

PART NUMBER

ISSUE

12-30-77

REV.

W

4-11-17

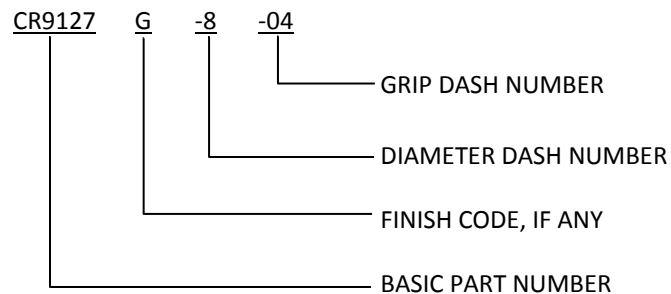
CR9127



## NOTES:

- ① MATERIAL DESIGNATION REFERS TO CHEMICAL COMPOSITION ONLY.
- ② MINIMUM GRIP FOR -5 DIAMETER IS .015; FOR -6 DIAMETER IS .015; FOR -8 DIAMETER IS .063.
- ③ SPECIAL ORDER ONLY.
- ④ THESE GRIPS NOT LISTED ON NASM20604 DRAWING.
- ⑤ MAY ALSO BE USED IN 1/64 THICKER GRIP.
- ⑥ FINISH CODES WITH THE PREFIX "G" INDICATE REACH COMPLIANT COATING.

## EXAMPLE OF CHERRY PART NUMBER:



SHEET 3 OF 3			PART NUMBER
ISSUE	12-30-77		CR9127
REV.	W	4-11-17	

**STANDARDS PAGE REVISION LOG      CR9127**

REV LTR	DATE	DCR NUMBER	REVISION DESCRIPTION	COMP. BY
W	11 April 17	17-0268	<ul style="list-style-type: none"><li>CHANGE SLEEVE FINISH REQUIREMENT FROM CLASS 1 TO CLASS 2 ON SHEET 2</li></ul>	AA