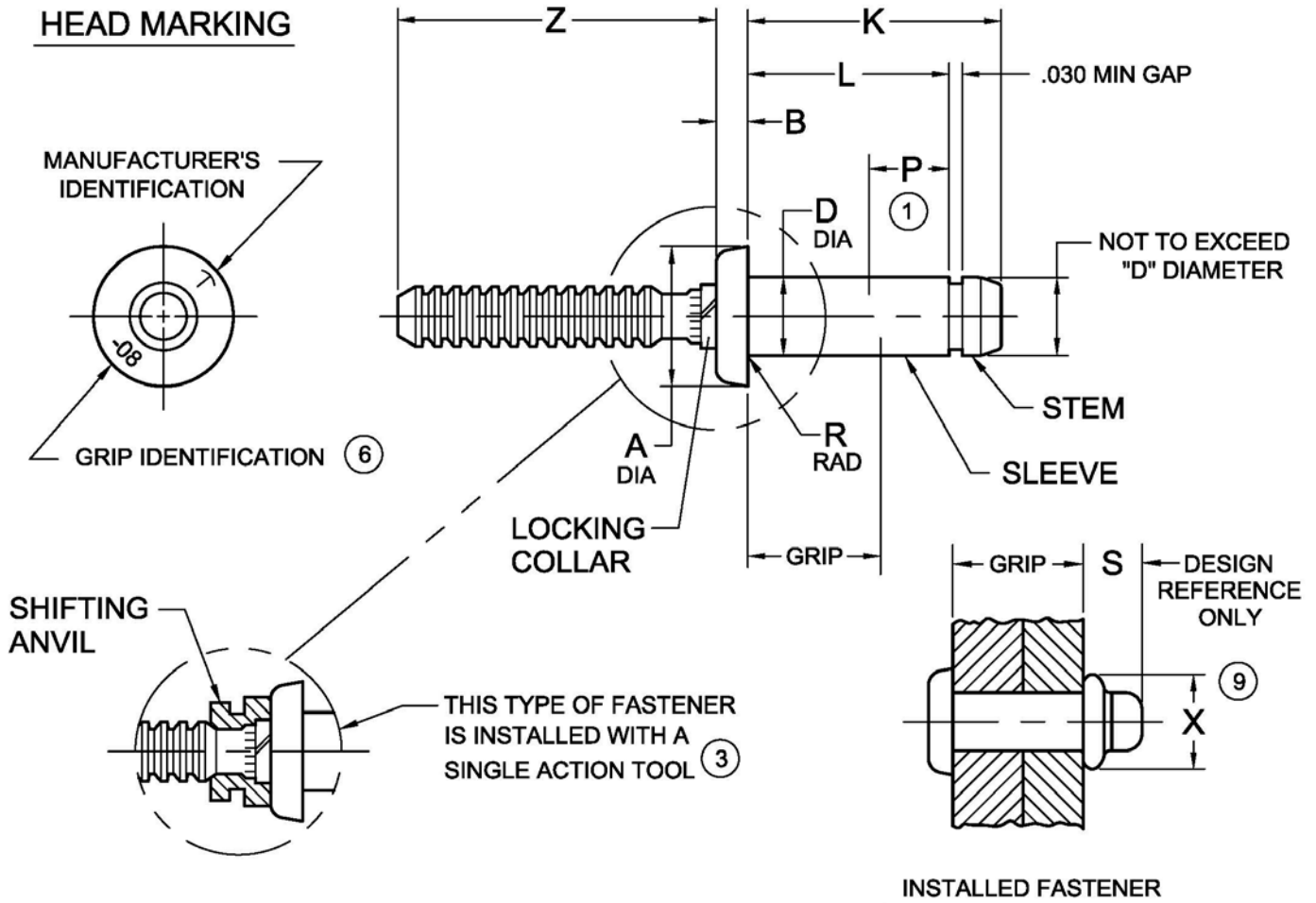




PRINTED COPIES OF THIS DOCUMENT ARE FOR "REFERENCE" ONLY. CURRENT REVISIONS ARE AVAILABLE ONLINE.



DIA DASH NO.		A	B	D	P	R	S	X	Z	HOLE LIMITS	INSTALLED STRENGTH	
DOUBLE ACTION	SINGLE ACTION			±.001	MAX	MAX	MAX	MIN	MIN		SINGLE SHEAR MINIMUM (LBS)	TENSILE MINIMUM (LBS)
-05	S05	.272 .250	.070 .062	.163	.215	.010	.202	.195	.844	.167 .164	2340	1350
-06	S06	.332 .305	.135 .125	.198	.250	.015	.231	.238	.875	.202 .199	3450	2100
---	-08	.432 .400	.140 .130	.259	.305	.018	.279	.315	1.000	.263 .260	5900	3650
---	-10	.522 .480	.141 .131	.311	.350	.021	.319	.373	1.218	.315 .312	8500	5200
---	-12	.627 .580	.205 .195	.373	.405	.025	.364	.448	1.562	.377 .374	12200	7500

NOTICE: ALL DIMENSIONS ARE IN INCHES AND APPLY AFTER FINISH AND BEFORE LUBRICATION UNLESS OTHERWISE SPECIFIED.

WARNING: FASTENERS MAY NOT PERFORM PROPERLY IF ALTERED FROM THE MANUFACTURER'S AS-SHIPPED CONDITION OR INSTALLED IN CONDITIONS OTHER THAN SPECIFIED HEREIN.

PROCUREMENT SPECIFICATION: NASM81177 NAS 523 CODE:	CHERRY MAXIBOLT ALLOY STEEL BLIND BOLT PROTRUDING HEAD		SHEET 1 OF 4		PART NUMBER		
			ISSUE	4-07-89		CR7311	
			REV.	AD	09 Oct 19		



GRIP DASH NO.	GRIP RANGE 1/16 RANGE		-05 DIA		-06 DIA		-08 DIA		-10 DIA		-12 DIA	
	MIN	MAX	L REF	K MAX	L REF	K MAX	L REF	K MAX	L REF	K MAX	L REF	K MAX
-01	.031	.095	.217	.372	---	---	---	---	---	---	---	---
-02	.094	.157	.280	.434	.303	.479	.344	.553	.381	.618	.423	.695
-03	.156	.220	.342	.496	.365	.541	.406	.616	.443	.680	.485	.757
-04	.219	.282	.405	.559	.428	.604	.469	.678	.506	.743	.548	.820
-05	.281	.345	.467	.622	.490	.666	.531	.740	.568	.805	.610	.883
-06	.344	.407	.530	.684	.553	.729	.594	.803	.631	.868	.673	.945
-07	.406	.470	.592	.746	.615	.791	.656	.866	.693	.930	.735	1.007
-08	.469	.532	.655	.809	.678	.854	.719	.928	.756	.993	.798	1.070
-09	.531	.595	.717	.872	.740	.916	.781	.990	.818	1.055	.860	1.133
-10	.594	.657	.780	.934	.803	.979	.844	1.053	.881	1.118	.923	1.195
-11	.656	.720	.842	.996	.865	1.041	.906	1.116	.943	1.180	.985	1.257
-12	.719	.782	.905	1.059	.928	1.104	.969	1.178	1.006	1.243	1.048	1.320
-13	.781	.845	.967	1.122	.990	1.166	1.031	1.240	1.068	1.305	1.110	1.383
-14	.844	.907	1.030	1.184	1.053	1.229	1.094	1.303	1.131	1.368	1.173	1.445
-15	.906	.970	1.092	1.246	1.115	1.291	1.156	1.366	1.193	1.430	1.235	1.507
-16	.969	1.032	1.155	1.309	1.178	1.354	1.219	1.428	1.256	1.493	1.298	1.570
-17	1.031	1.095	1.217	1.372	1.240	1.416	1.281	1.490	1.318	1.555	1.360	1.633
-18	1.094	1.157	1.280	1.434	1.303	1.479	1.344	1.553	1.381	1.618	1.423	1.695
-19	1.156	1.220	1.342	1.496	1.365	1.541	1.406	1.616	1.443	1.680	1.485	1.757
-20	1.219	1.282	1.405	1.559	1.428	1.604	1.469	1.678	1.506	1.743	1.548	1.820

SHEET 2 OF 4			PART NUMBER
ISSUE	4-07-89		CR7311
REV.	AD	09 Oct 19	



FINISH CODE	MATERIAL ②			FINISH		
	SLEEVE	STEM	LOCK RING	SLEEVE	STEM ⑧	LOCK RING
NONE	4037 ALLOY STEEL ASTM-A-331 OR ASTM-A-108	8740 ALLOY STEEL ASTM-A-331 OR ASTM-A-108	A-286 CRES AMS5731 OR AMS5737	CAD PLATE PER AMS-QQ-P-416 TYPE II, CLASS 2	CAD PLATE PER AMS-QQ-P-416 TYPE I, CLASS 3	PASSIVATE AMS2700
D	4037 ALLOY STEEL ASTM-A-331 OR ASTM-A-108	8740 ALLOY STEEL ASTM-A-331 OR ASTM-A-108	A-286 CRES AMS5731 OR AMS5737	ALUMINUM COATING PER MIL-DTL-83488	ALUMINUM COATING PER MIL-DTL-83488	PASSIVATE AMS2700
EE	4037 ALLOY STEEL ASTM-A-331 OR ASTM-A-108	8740 ALLOY STEEL ASTM-A-331 OR ASTM-A-108	A-286 CRES AMS5731 OR AMS5737	ALUMINUM COATING PER NAS4006	ALUMINUM COATING PER NAS4006	PASSIVATE AMS2700
EZ	4037 ALLOY STEEL ASTM-A-331 OR ASTM-A-108	8740 ALLOY STEEL ASTM-A-331 OR ASTM-A-108	A-286 CRES AMS5731 OR AMS5737	ZINC PLATE PER ASTM-B-633, TYPE 2	ALUMINUM COATING PER NAS4006	PASSIVATE AMS2700
Z	4037 ALLOY STEEL ASTM-A-331 OR ASTM-A-108	8740 ALLOY STEEL ASTM-A-331 OR ASTM-A-108	A-286 CRES AMS5731 OR AMS5737	ZINC PLATE PER ASTM-B-633, TYPE 2	CAD PLATE PER AMS-QQ-P-416, TYPE 1, CLASS 3	PASSIVATE AMS2700
DD	4037 ALLOY STEEL ASTM-A-331 OR ASTM-A-108	8740 ALLOY STEEL ASTM-A-331 OR ASTM-A-108	A-286 CRES AMS5731 OR AMS5737	IVD ALUMINUM COATING PER MIL-DTL-83488, CL3, TYPE 2 WITH A BLUE OR GREEN DIE TO FED-STD-595	ALUMINUM COATING PER MIL-DTL-83488	PASSIVATE AMS2700
GEE ⑩	4037 ALLOY STEEL ASTM-A-331 OR ASTM-A-108	8740 ALLOY STEEL ASTM-A-331 OR ASTM-A-108	A-286 CRES AMS5731 OR AMS5737	ALUMINUM COATING PER NAS4006, Class NC	ALUMINUM COATING PER NAS4006, Class NC	PASSIVATE AMS2700
GEZ ⑩	4037 ALLOY STEEL ASTM-A-331 OR ASTM-A-108	8740 ALLOY STEEL ASTM-A-331 OR ASTM-A-108	A-286 CRES AMS5731 OR AMS5737	ZINC PLATE PER ASTM-B-633, TYPE 2	ALUMINUM COATING PER NAS4006, Class NC	PASSIVATE AMS2700
GD ⑩	4037 ALLOY STEEL ASTM-A-331 OR ASTM-A-108	8740 ALLOY STEEL ASTM-A-331 OR ASTM-A-108	A-286 CRES AMS5731 OR AMS5737	ALUMINUM COATING PER MIL-DTL-83488, CL 3, TYPE II (SUPPLEMENTAL: MIL-DTL-5541, CL 1A, TYPE II)	ALUMINUM COATING PER MIL-DTL-83488, CL 3, TYPE II (SUPPLEMENTAL: MIL-DTL-5541, CL 1A, TYPE II)	PASSIVATE AMS2700

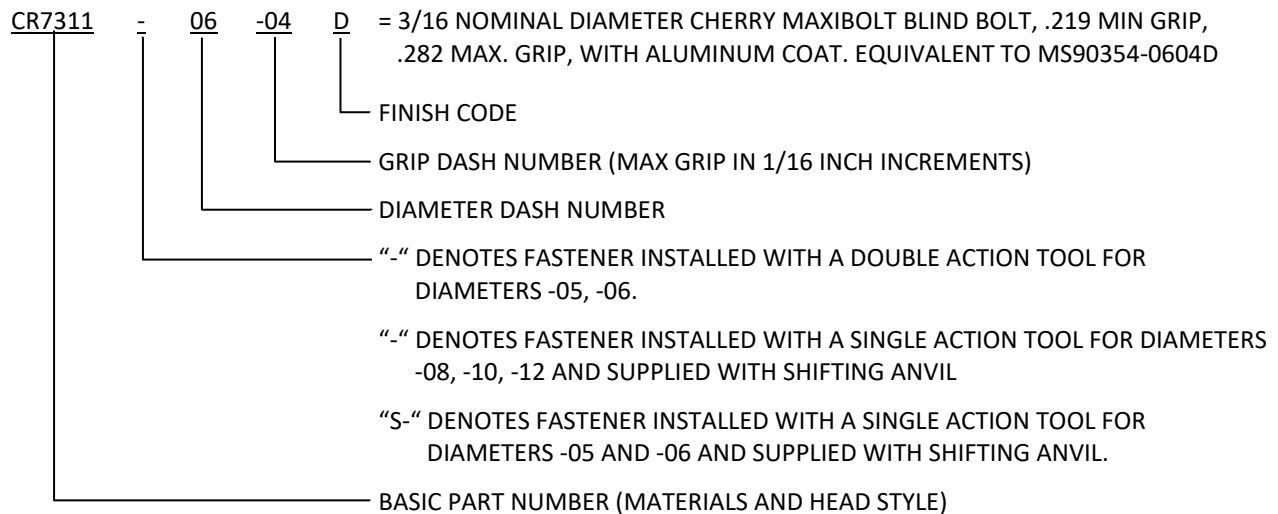
NOTES:

SHEET 3 OF 4			PART NUMBER	
ISSUE	4-07-89		CR7311	
REV.	AD	09 Oct 19		



- ① THIS LENGTH OF "D" DIAMETER MAY BE .002 UNDERSIZE.
- ② MATERIAL DESIGNATION REFERS TO CHEMICAL COMPOSITION ONLY.
- ③ -05 AND -06 DIA FASTENERS ARE INSTALLED WITH A DOUBLE ACTION (SHIFTING) TOOL; S05 DIA, S06 DIA, -08 DIA, -10 DIA AND -12 DIA FASTENERS ARE INSTALLED WITH A SINGLE ACTION (NON-SHIFTING) TOOL AND ARE SUPPLIED WITH SHIFTING ANVIL. SHIFTING ANVIL IS SOLID OR SPLIT, MFG'S OPTION.
- 4. SIZES BELOW HEAVY LINE ARE SPECIAL ORDER ONLY.
- 5. THIS PRODUCT MEETS THE REQUIREMENTS OF MS90354 (EXCEPT FOR ZINC PLATING AND NAS4006 ALUM COATING) FOR "-" CODE PARTS, IN THE -05, -06, -08, -10 AND -12 DIAMETER SERIES; AND FOR "S" CODE PARTS IN THE S05 AND S06 DIAMETER SERIES.
- ⑥ SINGLE DIGIT MARKING IS PERMISSIBLE FOR GRIP DASH NUMBERS LESS THAN 10. A DASH "-" BEFORE GRIP NUMBER IS OPTIONAL.
- 7. LUBRICATION: NONE EXCEPT MANUFACTURER'S OPTION TO LUBRICATE LOCK MECHANISM WITH LOX (LIQUID OXYGEN) COMPATIBLE DRY FILM LUBRICANT.
- ⑧. SHIFTING ANVIL OR STEM DYED GREEN FOR S05 AND S06 DIAMETERS ONLY.
- ⑨ MAXIMUM DIAMETER OF BLIND HEAD (Ø X) SHALL NOT EXCEED MAXIMUM DIAMETER OF MANUFACTURED HEAD (Ø A).
- ⑩ FINISH CODES WITH THE PREFIX "G" INDICATE REACH COMPLIANT COATING.

EXAMPLE OF CHERRY PART NUMBER:



SHEET 4 OF 4		PART NUMBER
ISSUE	4-07-89	
REV.	AD	09 Oct 19
CR7311		

STANDARDS PAGE REVISION LOG CR7311

REV LTR	DATE	DCR NUMBER	REVISION DESCRIPTION	COMP. BY
AD	09 Oct 19	19-0572	<ul style="list-style-type: none">SHEET 3 – FINISH CODE DD; SLEEVE – ADDED “IVD” & “WITH A BLUE OR” TO FINISH.	AA