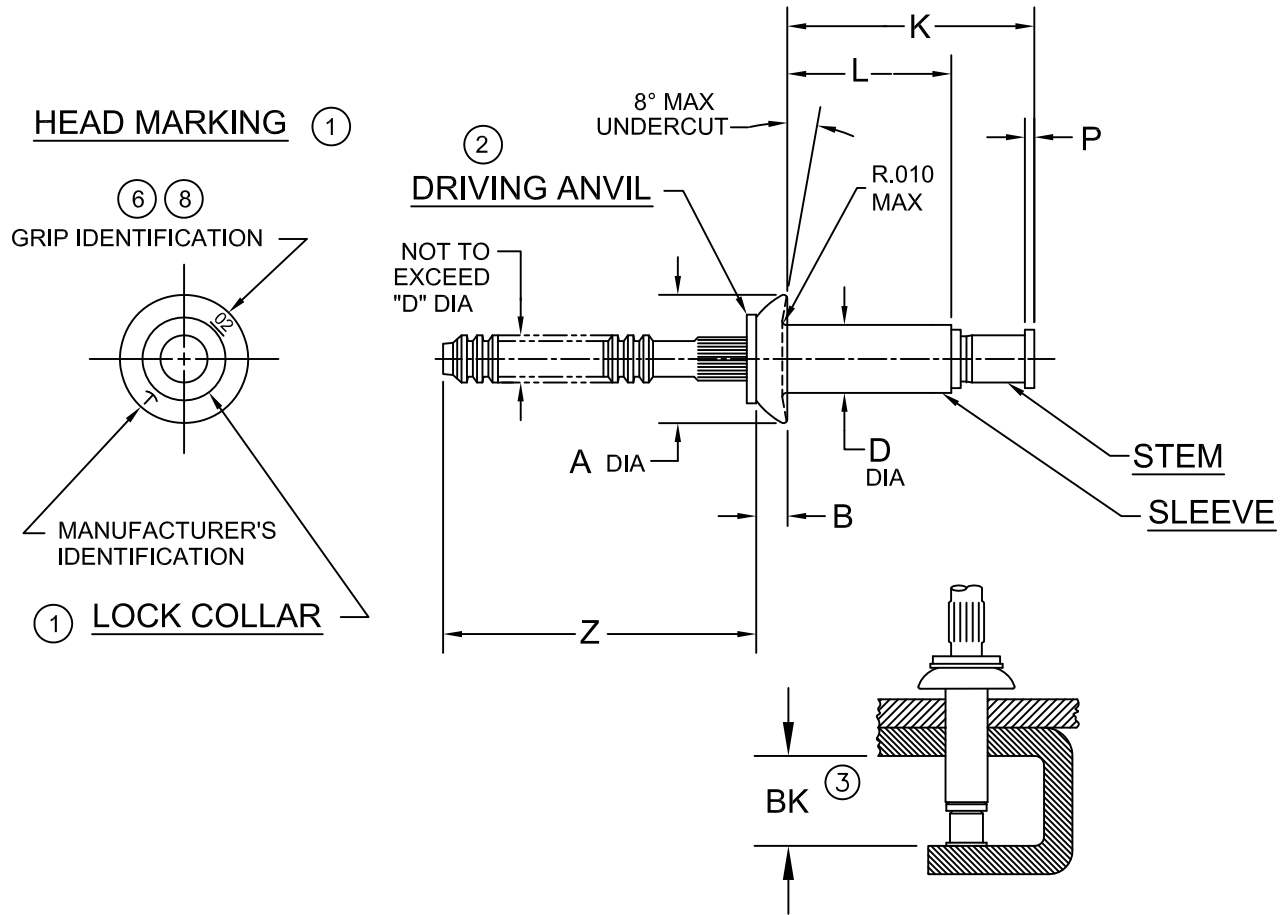




PRINTED COPIES OF THIS DOCUMENT ARE FOR "REFERENCE" ONLY. CURRENT REVISIONS ARE AVAILABLE ON-LINE.



DIA. DASH NO.	A ±.010	B +.010 -.000	D +.003 -.001	P MIN	Z MIN	BK MIN	HOLE LIMITS	
							MIN	MAX
-4	.250	.054	.140	.010	.87	.390	.143	.146
-5	.312	.067	.173	.015	.94	.395	.176	.180
-6	.375	.080	.201	.015	.94	.410	.205	.209
-8	.500	.107	.267	.015	.96	.490	.271	.275

SEE SHEET 2 FOR LENGTH DIMENSIONS, MATERIALS AND FINISHES

SEE SHEET 3 FOR NOTES AND PART NUMBER EXAMPLE

NOTICE : ALL DIMENSIONS ARE IN INCHES AND APPLY AFTER FINISH AND BEFORE LUBRICATION UNLESS OTHERWISE SPECIFIED.

WARNING : FASTENERS MAY NOT PERFORM PROPERLY IF ALTERED FROM THE MANUFACTURER'S AS-SHIPED CONDITION OR INSTALLED IN CONDITIONS OTHER THAN SPECIFIED HEREIN.

PROCUREMENT SPECIFICATION : PS-CMR-3000	CHERRYMAX® RIVET UNIVERSAL HEAD LOCKED SPINDLE (OVERSIZE)	SHEET 1 OF 3		PART NUMBER CR3243
		ISSUE	06-24-92	
NAS 523 CODE : SEE SHEET 2		REV.	AC 07-24-14	



GRIP DASH NO. ⑥	GRIP LIMITS 1/16 RANGE		-4 DIA		-5 DIA		-6 DIA		-8 DIA	
			L	K	L	K	L	K	L	K
	MIN	MAX	+ .000 - .030	MAX	+ .000 - .030	MAX	+ .000 - .030	MAX	+ .000 - .030	MAX
-01	④	.062	.175	.37	.203	.43	.242	.45	----	----
-02	.063	.125	.238	.46	.246	.47	.265	.50	.313	.57
-03	.126	.187	.301	.52	.309	.53	.328	.55	.375	.64
-04	.188	.250	.363	.58	.371	.60	.390	.62	.437	.70
-05	.251	.312	.426	.65	.434	.66	.453	.68	.500	.77
-06	.313	.375	.488	.71	.496	.72	.515	.74	.562	.83
-07	.376	.437	.551	.78	.559	.79	.578	.82	.625	.89
-08	.438	.500	.613	.84	.621	.85	.640	.89	.687	.95
-09	.501	.562	.676	.90	.684	.91	.703	.95	.750	1.02
-10	.563	.625	---	---	.746	.98	.765	1.01	.812	1.08
-11	.626	.687	---	---	.809	1.04	.828	1.07	.875	1.14
-12	.688	.750	---	---	---	---	.890	1.14	.937	1.20
-13	.751	.812	---	---	---	---	.953	1.20	1.000	1.27
-14	.813	.875	---	---	---	---	---	---	1.062	1.60

FINISH CODE	NAS 523 CODE	MATERIAL ⑤			FINISH		
		SLEEVE	STEM	LOCK COLLAR	SLEEVE	STEM	LOCK COLLAR
---	ARE	5056 ALUM. PER QQ-A-430	8740 STEEL PER AMS 6322	A-286 CRES PER AMS 5731 & AMS 5737	CHEM. FILM PLAIN COLOR PER MIL-C-5541	CAD. PLATE PER QQ-P-416 TYPE II, CL.2	PASSIVATE PER AMS 2700
A	---	5056 ALUM. PER QQ-A-430	8740 STEEL PER AMS 6322	A-286 CRES PER AMS 5731 & AMS 5737	CHEM. FILM GOLD COLOR PER MIL-C-5541	CAD. PLATE PER QQ-P-416 TYPE II, CL.2	PASSIVATE PER AMS 2700
⑨ PR	ARE	5056 ALUM. PER QQ-A-430	8740 STEEL PER AMS 6322	A-286 CRES PER AMS 5731 & AMS 5737	CHEM. FILM PLAIN COLOR PER MIL-C-5541	CAD. PLATE PER QQ-P-416 TYPE II, CL.2	PASSIVATE PER AMS 2700
⑦ T	---	5056 ALUM. PER QQ-A-430	8740 STEEL PER AMS 6322	A-286 CRES PER AMS 5731 & AMS 5737	CHEM. FILM PLAIN COLOR PER MIL-C-5541	CAD. PLATE PER QQ-P-416 TYPE II, CL.2	PASSIVATE PER AMS 2700
⑨ APR	---	5056 ALUM. PER QQ-A-430	8740 STEEL PER AMS 6322	A-286 CRES PER AMS 5731 & AMS 5737	CHEM. FILM GOLD COLOR PER MIL-C-5541	CAD. PLATE PER QQ-P-416 TYPE II, CL.2	PASSIVATE PER AMS 2700

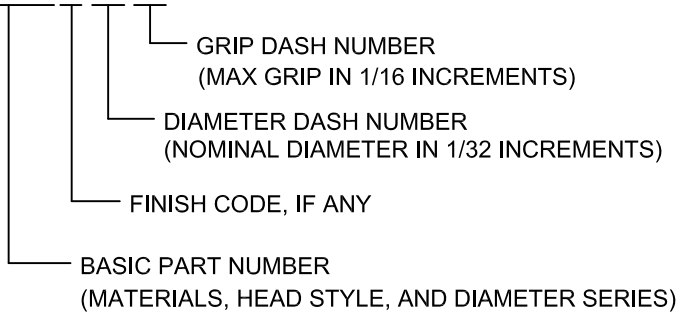
SHEET 2 OF 3		PART NUMBER CR3243
ISSUE	06-24-92	
REV.	AC 07-24-14	



- NOTES:
- ① HEAD MARKINGS AND LOCK COLLAR VISIBLE AFTER INSTALLATION.
 - ② SILVER COLORED DRIVING ANVIL IDENTIFIES OVERSIZE DIAMETER RIVETS.
 - ③ MINIMUM BLIND SIDE CLEARANCE FOR SATISFACTORY INSTALLATION.
 - ④ MINIMUM GRIP FOR -4 DIA. IS .025; FOR -5 IS .031; AND FOR -6 IS .037.
 - ⑤ MATERIAL DESIGNATION REFERS TO CHEMICAL COMPOSITION ONLY.
 - ⑥ SINGLE DIGIT HEAD MARKING IS PERMISSIBLE, AT MANUFACTURER'S OPTION, FOR GRIP DASH NUMBERS LESS THAN 10.
 - ⑦ "T" CODE - PARTS ARE MANUFACTURED BARE; IF LUBE IS REQUIRED, USE TRANSLUBE 20204 ONLY. TRANSLUBE ("T" CODE) WILL BE UNAVAILABLE FOR PROCUREMENT AS OF 01-01-92.
 - ⑧ A DASH MAY BE MARKED UNDER OR TO THE RIGHT SIDE OF THE GRIP IDENTIFICATION AT MANUFACTURER'S OPTION.
 - ⑨ "PR" CODE - PARTS ARE MANUFACTURED BARE; IF LUBE IS REQUIRED, USE PAR 90 ONLY.

PART NUMBER EXAMPLE:

CR3243 A -5 -05



SHEET 3 OF 3		PART NUMBER
ISSUE	06-24-92	CR3243
REV.	AC 07-24-14	



STANDARDS PAGE REVISION LOG

REV LTR	DATE	DCR NUMBER	REVISION DESCRIPTION	COMP. BY
AC	7-24-14	14-0710	ADDED "P" STEM HEAD THICKNESS TO VIEW AND CHART; ADDED "AND AMS5737" TO LOCK COLLAR MATERIAL CALLOUT	CM