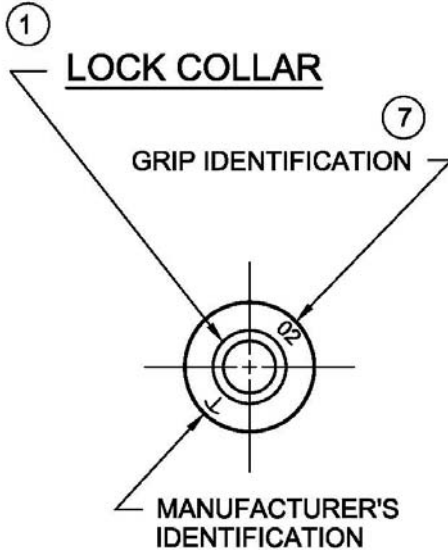




PRINTED COPIES OF THIS DOCUMENT ARE FOR "REFERENCE" ONLY. CURRENT REVISIONS ARE AVAILABLE ONLINE.

**HEAD MARKING**  
FOR -6 AND -8 DIA ONLY



**HEAD MARKING**  
FOR -4 AND -5 DIA ONLY

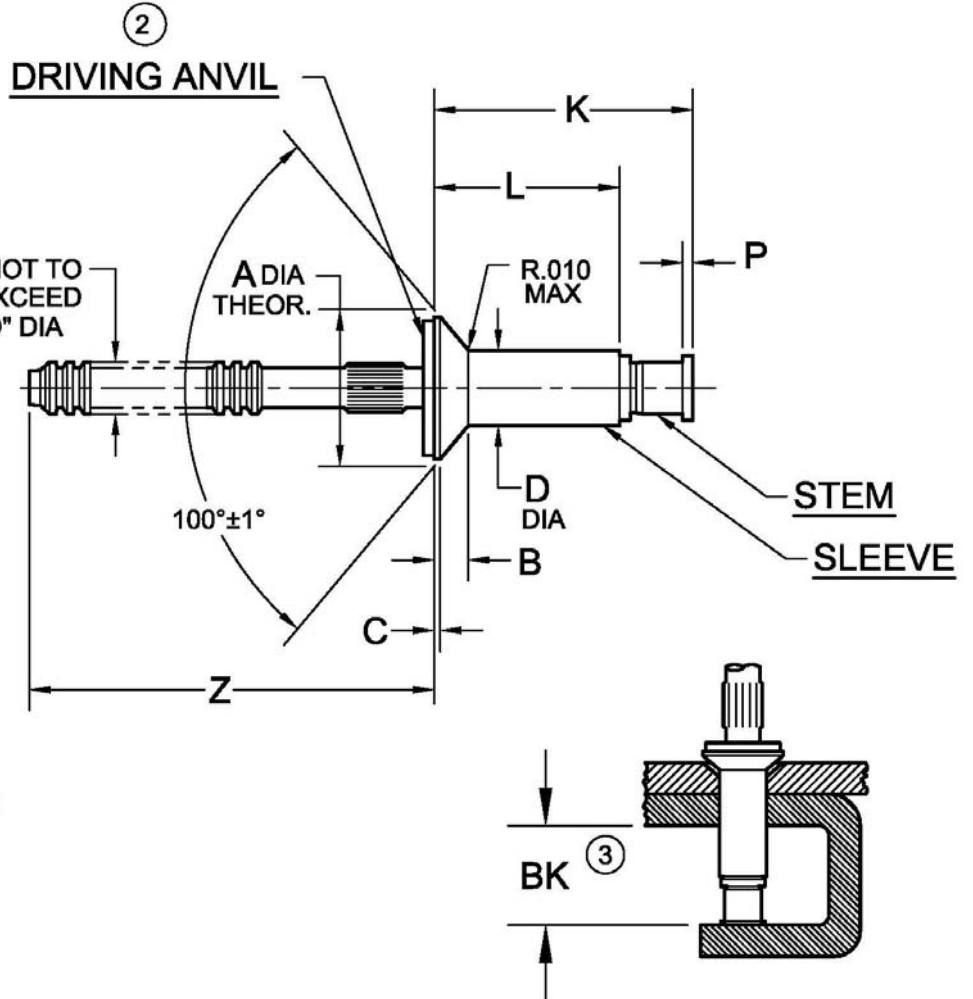
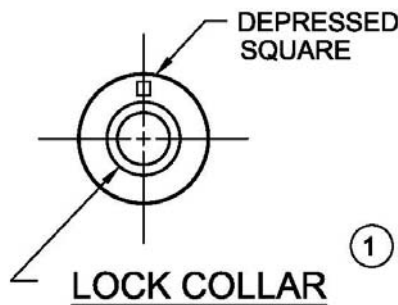


TABLE I

| DIA.<br>DASH<br>NO. | A<br>±.004 | B<br>REF | C           | D<br>+.003<br>-.001 | P<br>MIN | Z<br>REF | BK<br>MIN | HOLE LIMITS |      |
|---------------------|------------|----------|-------------|---------------------|----------|----------|-----------|-------------|------|
|                     |            |          |             |                     |          |          |           | MIN         | MAX  |
| -4                  | .192       | .028     | .002 - .006 | .126                | .010     | .87      | .355      | .129        | .132 |
| -5                  | .243       | .037     | .002 - .006 | .157                | .015     | .94      | .370      | .160        | .164 |
| -6                  | .299       | .046     | .002 - .006 | .189                | .015     | .94      | .415      | .192        | .196 |
| -8                  | .393       | .060     | .002 - .016 | .253                | .015     | .97      | .485      | .256        | .261 |

NOTICE: ALL DIMENSIONS ARE IN INCHES AND APPLY AFTER FINISH AND BEFORE LUBRICATION UNLESS OTHERWISE SPECIFIED.

WARNING: FASTENERS MAY NOT PERFORM PROPERLY IF ALTERED FROM THE MANUFACTURER'S AS-SHIPPED CONDITION OR INSTALLED IN CONDITIONS OTHER THAN SPECIFIED HEREIN.

|  |   |  |              |         |             |
|--|---|--|--------------|---------|-------------|
| PROCUREMENT SPECIFICATION:<br><br>PS-CMR-3000<br><br>NAS 523 CODE: ASK | <b>CHERRYMAX® RIVET</b><br>NAS 1097 100° FLUSH HEAD<br>NOMINAL DIAMETER |  | SHEET 1 OF 3 |         | PART NUMBER |
|  |   |  | ISSUE        | 6-24-92 |             |
|  |   |  | REV.         | Y       | 9-10-15     |



TABLE II

| FINISH CODE | MATERIAL ⑤                       |                              |  | FINISH   |  |                           |
|-------------|----------------------------------|------------------------------|--|--|--|---------------------------|
|             | SLEEVE                           | STEM                         | LOCK COLLAR                                    | SLEEVE   | STEM   | LOCK COLLAR               |
| ---         | 5056 ALUMINUM<br>PER<br>QQ-A-430 | 8740 STEEL<br>PER<br>AMS6322 | A-286 CRES<br>PER<br>AMS 5731<br>&<br>AMS 5737 | CHEM FILM<br>PLAIN COLOR<br>PER<br>MIL-DTL-5541                    | CAD. PLATE<br>PER<br>AMS-QQ-P-416,<br>TYPE II, CL2 | PASSIVATE PER<br>AMS 2700 |
| PR ⑧        |                                  |                              |  | RIVET KOTE®<br>ICS 201   |  |                           |
| RK ⑩        |                                  |                              |  | CHEM FILM<br>PLAIN COLOR<br>PER<br>MIL-DTL-5541                    |  |                           |
| T ⑨         |                                  |                              |  | CHEM FILM<br>PLAIN COLOR<br>PER<br>MIL-DTL-5541,<br>CL 1A, TYPE II | ZINC PLATE<br>PER<br>AMS2417,<br>TYPE II           |                           |
| GZN ⑪       |                                  |                              |  |  |  |                           |

TABLE III

| GRIP DASH NO. | GRIP RANGE |      | -4 DIA              |          | -5 DIA              |          | -6 DIA              |          | -8 DIA              |          |
|---------------|------------|------|---------------------|----------|---------------------|----------|---------------------|----------|---------------------|----------|
|               | MIN        | MAX  | L<br>+0.00<br>-0.30 | K<br>MAX | L<br>+0.00<br>-0.30 | K<br>MAX | L<br>+0.00<br>-0.30 | K<br>MAX | L<br>+0.00<br>-0.30 | K<br>MAX |
| -01           | .045       | .062 | .221                | .45      | ---                 | ---      | ---                 | ---      | ---                 | ---      |
| -02           | ④          | .125 | .224                | .45      | .230                | .47      | .262                | .51      | ---                 | ---      |
| -03           | .126       | .187 | .287                | .51      | .293                | .53      | .325                | .57      | .378                | .65      |
| -04           | .188       | .250 | .349                | .57      | .355                | .59      | .387                | .64      | .440                | .72      |
| -05           | .251       | .312 | .412                | .63      | .418                | .65      | .450                | .70      | .503                | .78      |
| -06           | .313       | .375 | .474                | .70      | .480                | .72      | .512                | .76      | .565                | .84      |
| -07           | .376       | .437 | .537                | .76      | .543                | .77      | .575                | .82      | .628                | .90      |
| -08           | .438       | .500 | .599                | .82      | .605                | .84      | .637                | .88      | .890                | .97      |
| -09           | .501       | .562 | .662                | .88      | .668                | .90      | .700                | .95      | .753                | 1.03     |
| -10           | .563       | .625 | ---                 | ---      | .730                | .96      | .762                | 1.01     | .815                | 1.09     |
| -11           | .626       | .687 | ---                 | ---      | .793                | 1.02     | .825                | 1.07     | .878                | 1.15     |
| -12           | .688       | .750 | ---                 | ---      | ---                 | ---      | .887                | 1.13     | .940                | 1.22     |
| -13           | .751       | .812 | ---                 | ---      | ---                 | ---      | ---                 | ---      | 1.003               | 1.28     |
| -14           | .813       | .875 | ---                 | ---      | ---                 | ---      | ---                 | ---      | 1.065               | 1.34     |

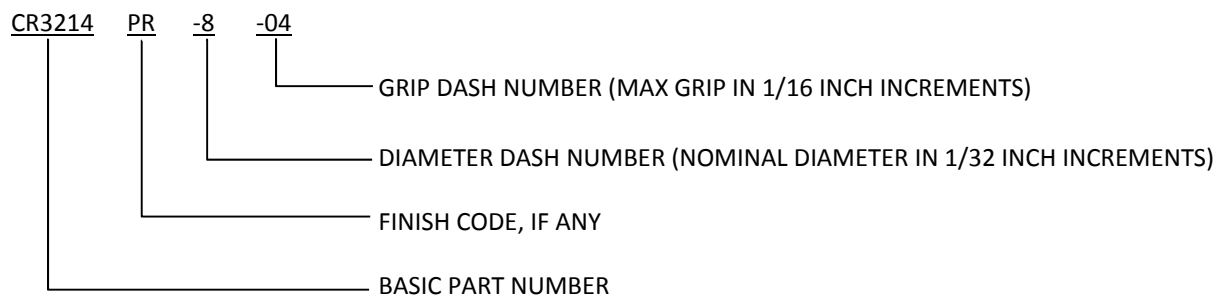
|               |         |             |
|---------------|---------|-------------|
| SHEET 2 OF 3  |         | PART NUMBER |
| ISSUE         | 6-24-92 |             |
| REV.          | Y       | 9-10-15     |
| <b>CR3214</b> |         |             |



## NOTES:

- ① HEAD MARKINGS AND LOCK COLLAR VISIBLE AFTER INSTALLATION.
- ② GOLD COLORED DRIVING ANVIL IDENTIFIES NOMINAL DIAMETER RIVETS.
- ③ MINIMUM BLIND SIDE CLEARANCE FOR SATISFACTORY INSTALLATION (DESIGN REFERENCE ONLY).
- ④ MINIMUM LENGTH FOR GRIP -02 PARTS: FOR -4 DIA IS .063; FOR -5 IS .065; AND FOR -6 IS .080.
- ⑤ MATERIAL DESIGNATION REFERS TO CHEMICAL COMPOSITION ONLY.
6. SHEET THICKNESS FOR MACHINE COUNTERSUNK HOLES SHALL NOT BE LESS THAN "B" +.010.
- ⑦ SINGLE DIGIT HEAD MARKING IS PERMISSIBLE, AT MANUFACTURER'S OPTION, FOR GRIP DASH NUMBERS LESS THAN 10.
- ⑧ PR" CODE – PARTS ARE MANUFACTURED BARE; IF LUBE IS REQUIRED, USE PAR 90 ONLY.
- ⑨ "T" CODE – PARTS ARE MANUFACTURED BARE; IIF LUBE IS REQUIRED, USE TRANSLUBE 20204 ONLY. TRANSLUBE ("T" CODE) WILL BE UNAVAILABLE FOR PROCUREMENT AS OF 01-01-92.
- ⑩ "RK" CODE PARTS ARE MANUFACTURED DRY; IF LUBE IS REQUIRED, USE PAR 90 ONLY.
- ⑪ FINISH CODES WITH THE PREFIX "G" INDICATE REACH COMPLIANT COATING.

## EXAMPLE OF CHERRY PART NUMBER:



|              |           |             |
|--------------|-----------|-------------|
| SHEET 3 OF 3 |           | PART NUMBER |
| ISSUE        | 6-24-92   | CR3214      |
| REV.         | Y 9-10-15 |             |

**STANDARDS PAGE REVISION LOG****CR3214**

| REV LTR | DATE    | DCR NUMBER | REVISION DESCRIPTION  | COMP. BY |
|---------|---------|------------|---|----------|
| Y       | 9-10-15 | 15-0972    | <ul style="list-style-type: none"><li>• ADDED REACH COMPLIANT COATING GZN</li><li>• ADDED NOTE 11</li><li>• GENERAL CLEANUP AND STANDARDIZATION</li></ul> | MC       |