



PRINTED COPIES OF THIS DOCUMENT ARE FOR "REFERENCE" ONLY. CURRENT REVISIONS ARE AVAILABLE ONLINE.

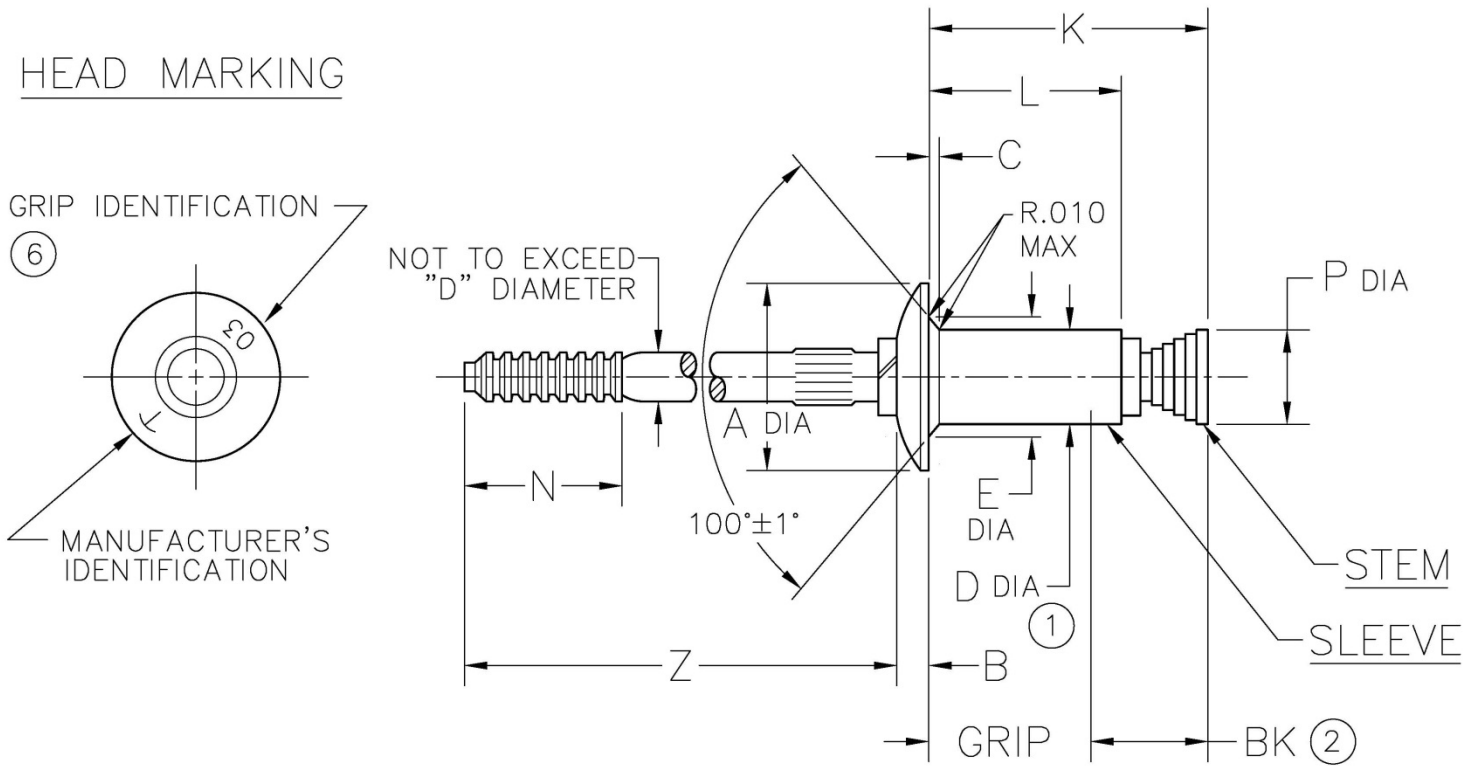


TABLE I

DIA. DASH NO.	A ±.010	B +.010 -0.000	C REF	D +.003 -0.001	E ±.005	N MIN	P MAX	BK MIN	Z REF	HOLE LIMITS	
										MIN	MAX
-4	.220	.022	.013	.140	.170	.375	.143	.30	1.65	.143	.146
-5	.286	.030	.017	.173	.213		.176	.33	1.63	.176	.180
-6	.353	.040	.023	.201	.255		.205	.37	1.65	.205	.209

TABLE II

FINISH CODE	NAS 523 CODE	MATERIAL (3)			FINISH		
		SLEEVE	STEM	LOCK RING	SLEEVE	STEM	LOCK RING
---	ACH	5056 PER QQ-A-430	8740 STEEL PER AMS 6322	MONEL PER QQ-N-281	CHEM. FILM PER MIL-DTL-5541	CAD. PLATE PER QQ-P-416 CL 2 TYPE II	NONE

NOTICE: ALL DIMENSIONS ARE IN INCHES AND APPLY AFTER FINISH AND BEFORE LUBRICATION UNLESS OTHERWISE SPECIFIED.

WARNING: FASTENERS MAY NOT PERFORM PROPERLY IF ALTERED FROM THE MANUFACTURER'S AS-SHIPPED CONDITION OR INSTALLED IN CONDITIONS OTHER THAN SPECIFIED HEREIN.

PROCUREMENT SPECIFICATION: NAS 1740	CHERRYLOCK® RIVET BULBED UNISINK HEAD		SHEET 1 OF 2		PART NUMBER
			ISSUE	07-02-97	CR2245
			REV.	R 5-27-15	
NAS 523 CODE: SEE TABLE II					



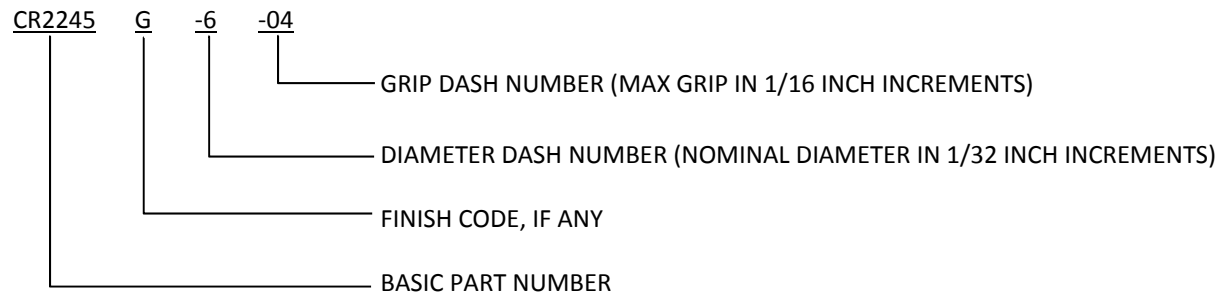
TABLE III

GRIP DASH NO. ⑦	GRIP RANGE		RIVET GROUP ④	-4 DIA		-5 DIA		-6 DIA	
	MIN	MAX		L ±.010	K MAX	L ±.010	K MAX	L ±.010	K MAX
-01	⑤	.062	A	.183	.32	.205	.34	.233	.38
-02		.125		.247	.38	.269	.41	.297	.45
-03		.187		.311	.45	.333	.47	.361	.52
-04		.250		.375	.51	.397	.54	.425	.58
-05		.312		.439	.58	.461	.60	.489	.65
-06		.375		.503	.64	.525	.67	.553	.71
-07		.437		.567	.71	.589	.73	.617	.78
-08		.500		.631	.77	.653	.80	.681	.84
-09		.562		.695	.84	.717	.86	.745	.91
-10		.625		---	---	.781	.93	.809	.97

NOTES:

- ① AN INCREASE OF .001 PERMISSIBLE WITHIN 0.100 OF BASE OF HEAD.
- ② MINIMUM BLIND SIDE CLEARANCE FOR SATISFACTORY INSTALLATION.
- ③ MATERIAL DESIGNATION REFERS TO CHEMICAL COMPOSITION ONLY.
- ④ RIVET GROUP REFERS TO SHIFT-POINT SETTING OF RIVETER.
- ⑤ MINIMUM GRIP FOR -4 DIA IS .033, FOR -5 DIA IS .042 AND FOR -6 DIA IS .053.
- ⑥ SINGLE DIGIT MARKING IS PERMISSIBLE, AT MANUFACTURER'S OPTION, FOR GRIP DASH (-) NUMBERS LESS THAN 10.

EXAMPLE OF CHERRY PART NUMBER:



SHEET 2 OF 2		PART NUMBER
ISSUE	07-02-97	
REV.	R	5-27-15
CR2245		

STANDARDS PAGE REVISION LOG CR2245

REV LTR	DATE	DCR NUMBER	REVISION DESCRIPTION	COMP. BY
R	5-27-15	14-1284	• GENERAL CLEANUP AND STANDARDIZATION	CL