



PRINTED COPIES OF THIS DOCUMENT ARE FOR "REFERENCE" ONLY. CURRENT REVISIONS ARE AVAILABLE ONLINE.

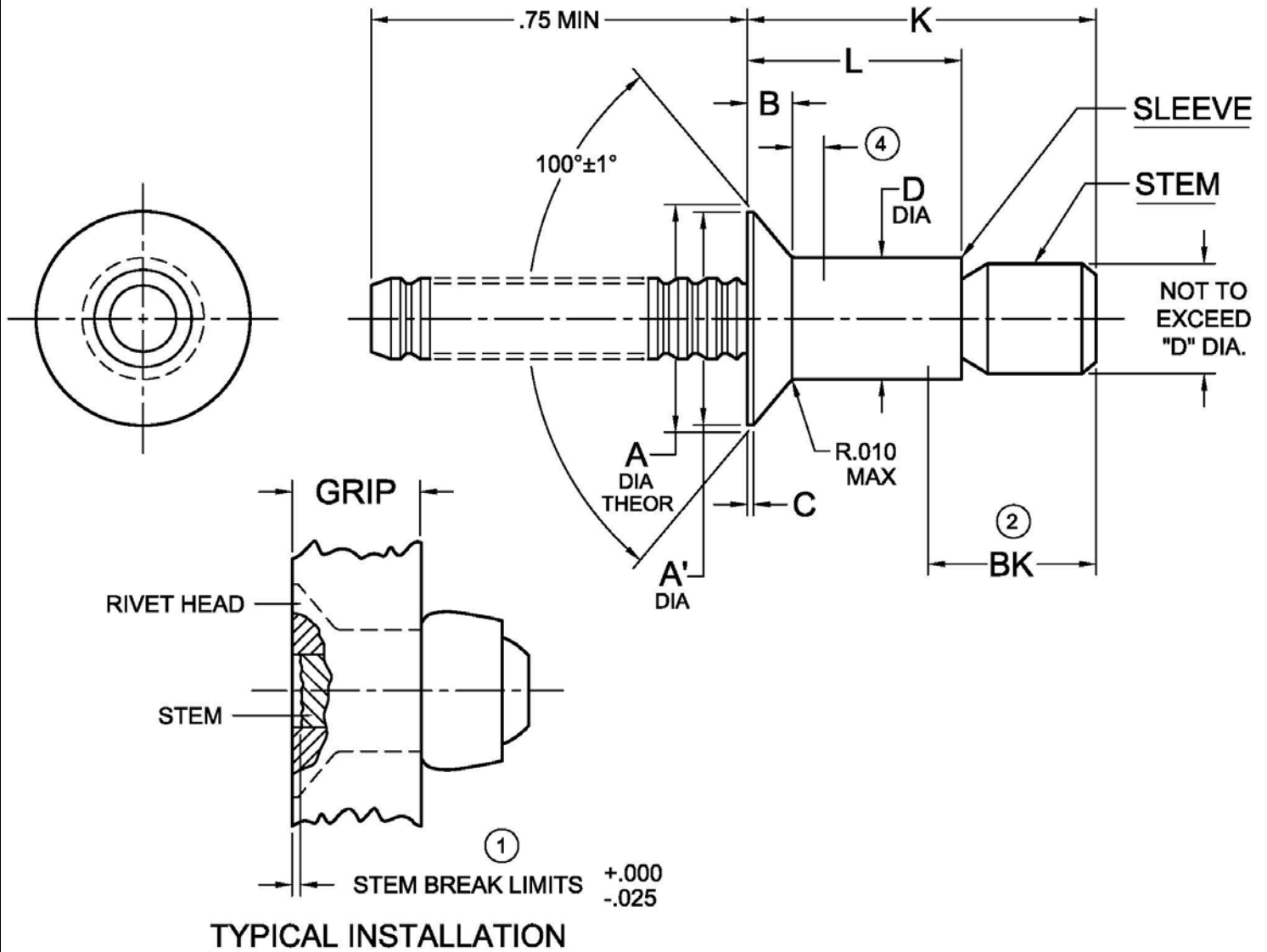


TABLE I

DIA. DASH NO.	A ±.004	A' ACTUAL MIN	B REF	C MAX	D +.003 -.001	HOLE LIMITS	
						MIN	MAX
-3	.179	.151	.036	.010	.094	.098	.101

NOTICE: ALL DIMENSIONS ARE IN INCHES AND APPLY AFTER FINISH AND BEFORE LUBRICATION UNLESS OTHERWISE SPECIFIED.

WARNING: FASTENERS MAY NOT PERFORM PROPERLY IF ALTERED FROM THE MANUFACTURER'S AS-SHIPED CONDITION OR INSTALLED IN CONDITIONS OTHER THAN SPECIFIED HEREIN.

PROCUREMENT SPECIFICATION: PS-NPR-1000 NAS 523 CODE:	3/32" SELF PLUGGING LOCKED SPINDLE BLIND RIVET 100° FLUSH HEAD	SHEET 1 OF 2		PART NUMBER	
		ISSUE	05-22-97		CR1122
		REV.	N	5-28-15	



TABLE II

FINISH CODE	MATERIAL ③		FINISH		LUBRICATION
	SLEEVE	STEM	SLEEVE	STEM	
---	2017 ALUMINUM ALLOY PER QQ-A-430	A286 CRES PER AMS 5731	GOLD COLOR CHEM. FILM PER MIL-DTL-5541	PASSIVATE PER AMS 2700	AS REQUIRED FOR PERFORMANCE
G ⑤			BLUE COLOR CHEM. FILM PER MIL-DTL-5541 CL 1A, TYPE II		

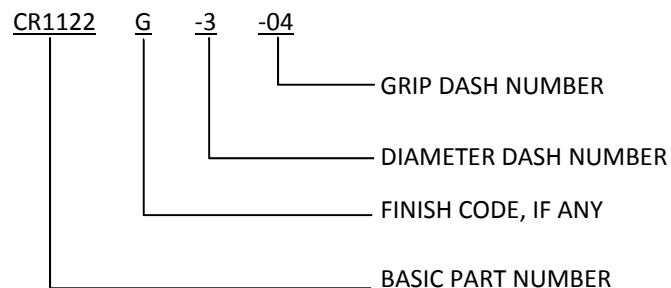
TABLE III

GRIP DASH NO.	GRIP RANGE		-3 DIAMETER		
	MIN	MAX	L MAX	K MAX	BK REF ②
-02.5	.080	.125	.203	.338	.275
-03	.126	.187	.265	.430	.305
-04	.188	.250	.328	.493	
-05	.251	.312	.390	.555	
-06	.313	.375	.453	.618	
-07	.376	.437	.515	.680	
-08	.438	.500	.578	.743	
-09	.501	.562	.640	.805	

NOTES:

- ① STEM BREAK OFF LOCATION MEASURED TO THE HIGHEST POINT ON THE FRACTURE SURFACE WITH A .050 DIAMETER STYLUS.
- ② MINIMUM BLIND SIDE CLEARANCE FOR SATISFACTORY INSTALLATION.
- ③ MATERIAL DESIGNATION REFERS TO CHEMICAL COMPOSITION ONLY.
- ④ AN INCREASE IN "D" DIAMETER OF .001 IS PERMISSIBLE WITHIN .100 OF BASE OF HEAD.
- ⑤ FINISH CODES WITH THE PREFIX "G" INDICATE REACH COMPLIANT COATING.

EXAMPLE OF CHERRY PART NUMBER:



SHEET 2 OF 2		PART NUMBER
ISSUE	05-22-97	
REV.	N	5-28-15
CR1122		

STANDARDS PAGE REVISION LOG

CR1122

REV LTR	DATE	DCR NUMBER	REVISION DESCRIPTION	COMP. BY
N	5-28-15	14-1307	<ul style="list-style-type: none">• ADDED REACH COMPLIANT COATING G• ADDED NOTE 5• GENERAL CLEANUP AND STANDARDIZATION	CL