



PRINTED COPIES OF THIS DOCUMENT ARE FOR "REFERENCE" ONLY. CURRENT REVISIONS ARE AVAILABLE ONLINE.

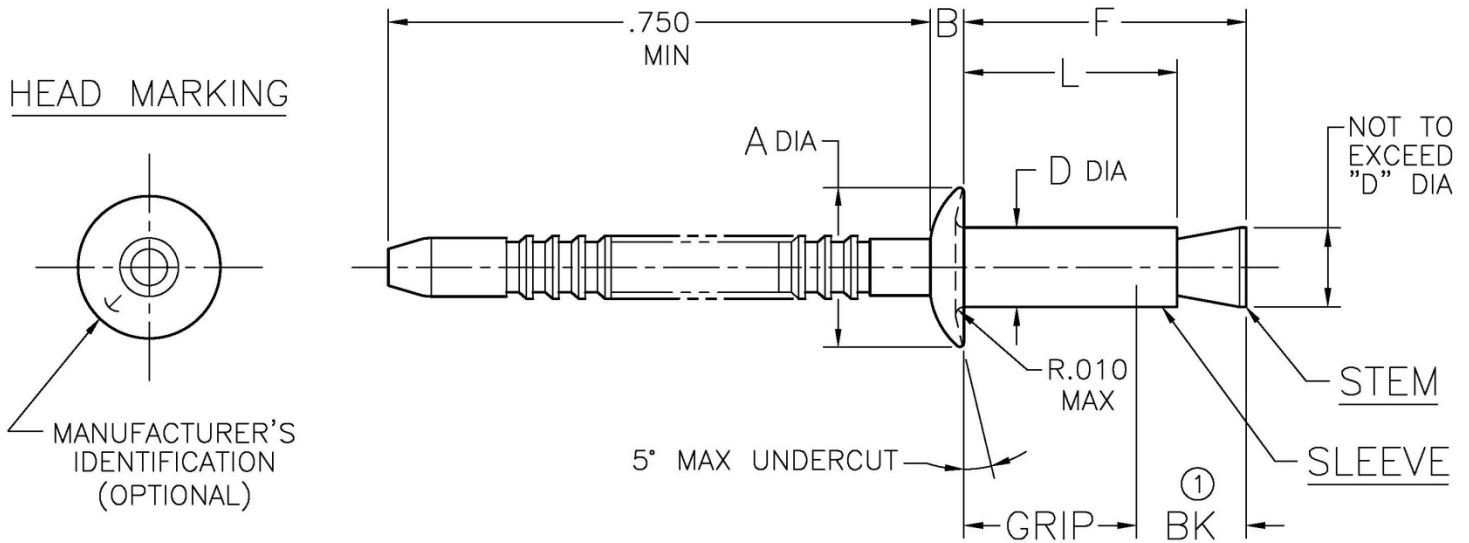


TABLE I

DIA. DASH NO.	A		B		BK ①	D		HOLE SIZE	
	MIN	MAX	MIN	MAX		MIN	MAX	MIN	MAX
-3	.181	.196	.040	.050	.140	.092	.097	.097	.101
-4	.238	.262	.054	.064	.170	.123	.128	.129	.132
-5	.296	.328	.067	.077	.200	.154	.159	.160	.164
-6	.356	.394	.080	.090	.230	.185	.190	.192	.196
-8	.475	.525	.112	.122	.260	.248	.253	.256	.261

NOTICE: ALL DIMENSIONS ARE IN INCHES AND APPLY AFTER FINISH AND BEFORE LUBRICATION UNLESS OTHERWISE SPECIFIED.

WARNING: FASTENERS MAY NOT PERFORM PROPERLY IF ALTERED FROM THE MANUFACTURER'S AS-SHIPED CONDITION OR INSTALLED IN CONDITIONS OTHER THAN SPECIFIED HEREIN.

PROCUREMENT SPECIFICATION:

⑤

CHERRY® NUT-PLATE RIVET
UNIVERSAL HEAD

SHEET 1 OF 4

PART NUMBER

ISSUE

05-14-82

REV.

AH

5-20-15

CCR274



TABLE II

MATERIAL CODE	FINISH CODE	MATERIAL ③		FINISH	
		SLEEVE	STEM	SLEEVE	STEM
CS	---	A-286 CRES PER AMS 5731	305 CRES PER ASTM A-493	SOLID FILM LUBE PER SAE AS 5272 AND PASSIVATE PER AMS 2700	PASSIVATE PER AMS 2700
	IPR			CAD PLATE PER AMS-QQ-P-416, TYPE II, CL 2, GREEN COLOR AND PAR 90	
	P1			ALUMINUM COATING PER NAS 4006	
	PR			PASSIVATE PER AMS 2700 AND PAR 90	
	RK			RIVET KOTE® ICS 201	
	T2			PASSIVATE PER AMS 2700 AND TIOLUBE 460	PASSIVATE PER AMS 2700 AND TIOLUBE 460
	XL			PASSIVATE PER AMS 2700	PASSIVATE PER AMS 2700 AND LUBECO 905
	ZN ④			NON-LUBRICATED ZINC NICKEL PLATE PER BAC 5637 TYPE II, CLASS 2, OR AMS 2417 TYPE II	PASSIVATE PER AMS 2700
	GP1 ⑥			ALUMINUM COATING PER NAS 4006 CLASS NC	
SS	---	C-1018 STEEL PER ASTM A-510 ANNEALED	1018 STEEL PER ASTM A-510	CAD PLATE PER AMS-QQ-P-416 TYPE II, CL 2	RUST INHIBITIVE LUBRICANT
	P1			ALUMINUM COATING PER NAS 4006	
	C			CAD PLATE PER AMS-QQ-P-416 TYPE II, CL 2	CAD PLATE PER AMS-QQ-P-416 TYPE II, CL 2
	CPR			CAD PLATE PER AMS-QQ-P-416 TYPE II, CL 2, GREEN COLOR AND PAR 90	
	GP1 ⑥			ALUMINUM COATING PER NAS 4006 CLASS NC	RUST INHIBITIVE LUBRICANT

SHEET 2 OF 4		PART NUMBER
ISSUE	05-14-82	
REV.	AH	5-20-15
CCR274		



TABLE III

GRIP DASH NO.	GRIP RANGE		-3 DIAMETER				-4 DIAMETER			
	MIN	MAX	L ±.010	F MAX	INSTALLED WEIGHT PER 1000 PCS		L ±.010	F MAX	INSTALLED WEIGHT PER 1000 PCS	
					Kgs	lbs			Kgs	lbs
-01	.015	.062	.130	.218	.100	.22	.160	.256	.390	.86
-02	.063	.125	.193	.281	.132	.29	.222	.318	.440	.97
-03	.126	.187	.255	.343	.163	.36	.285	.381	.480	1.08
-04	.188	.250	.318	.405	.195	.43	.347	.443	.540	1.19
-05	.251	.312	.380	.468	.227	.50	.410	.506	.590	1.30
-06	.313	.375	.443	.530	.259	.57	.472	.568	.640	1.41
-07	.376	.437	.505	.592	.290	.64	.534	.630	.689	1.52
-08	.438	.500	.568	.655	.322	.71	.597	.693	.739	1.63
-09 (2)	.501	.562	.630	.718	---	---	.660	.755	---	---
-10 (2)	.563	.625	.693	.780	---	---	.722	.818	---	---
-11 (2)	.626	.687	.755	.843	---	---	.785	.899	---	---
-12 (2)	.688	.750	.818	.905	---	---	.847	.961	---	---

GRIP DASH NO.	GRIP RANGE		-5 DIAMETER		-6 DIAMETER		-8 DIAMETER	
	MIN	MAX	L ±.010	F MAX	L ±.010	F MAX	L ±.010	F MAX
-02	.063	.125	.244	.352	.267	.377	.312	.443
-03	.126	.187	.307	.425	.330	.440	.375	.506
-04	.188	.250	.369	.477	.392	.502	.437	.568
-05	.251	.312	.431	.539	.455	.565	.500	.631
-06	.313	.375	.494	.601	.517	.627	.562	.693
-07	.376	.437	.557	.665	.580	.690	.625	.756
-08	.438	.500	.619	.727	.642	.752	.687	.818
-09 (2)	.501	.562	.682	.790	.705	.815	.750	.881
-10 (2)	.563	.625	.744	.852	.767	.877	.812	.943

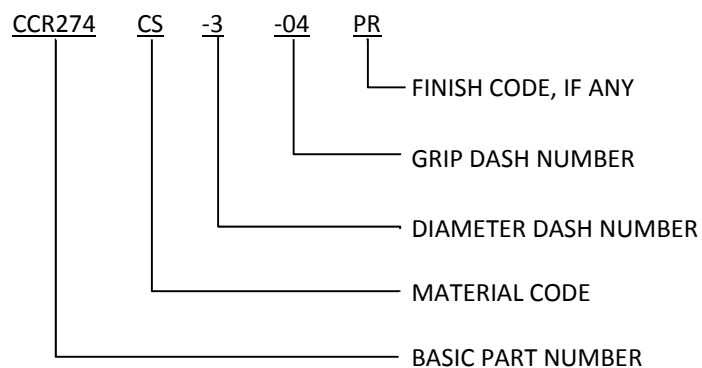
SHEET 3 OF 4			PART NUMBER
ISSUE	05-14-82		CCR274
REV.	AH	5-20-15	



NOTES:

- ① MINIMUM BLIND SIDE CLEARANCE FOR SATISFACTORY INSTALLATION.
- ② AVAILABLE ON SPECIAL ORDER ONLY.
- ③ MATERIAL DESIGNATION REFERS TO CHEMICAL COMPOSITION ONLY.
- ④ HYDROGEN EMBRITTLEMENT TESTING IS NOT REQUIRED.
- ⑤ PROCUREMENT SPECIFICATION FOR -3 AND -4 DIAMETERS IS PS-NPR-200.
FOR -5 AND -6 DIAMETERS IS MIL-R-8814.
- ⑥ FINISH CODES WITH THE PREFIX "G" INDICATE REACH COMPLIANT COATING.

EXAMPLE OF CHERRY PART NUMBER:



SHEET 4 OF 4		PART NUMBER
ISSUE	05-14-82	CCR274
REV.	AH 5-20-15	

STANDARDS PAGE REVISION LOG CCR274

REV LTR	DATE	DCR NUMBER	REVISION DESCRIPTION	COMP. BY
AH	5-20-15	14-1285	<ul style="list-style-type: none">• ADDED REACH COMPLIANT COATING GP1• ADDED NOTE 6• GENERAL CLEANUP AND STANDARDIZATION	CL